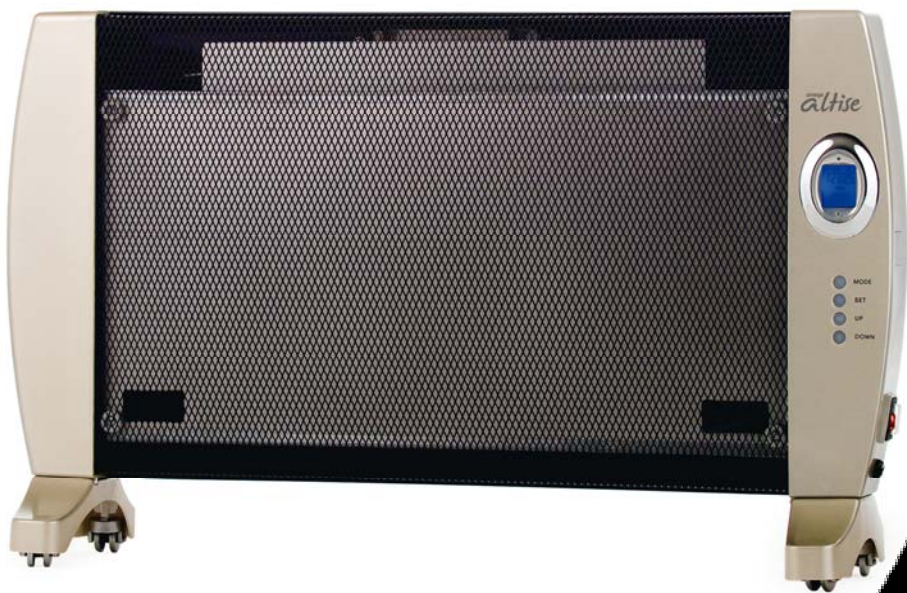


omega  
*altise*

**OPM15E, OPM20E &  
OPM24E**  
**Micathermic Panel Heaters**  
**Electronic & Remote Control**



**Instruction  
Manual**

## **Important Safety Instructions**

1. Disconnect the power plug before dismantling, assembling or before cleaning.
2. Make sure the heater is on a dry and even surface.
3. Always use the heater in an upright position.
4. Do not insert or allow foreign objects to enter any ventilation or exhaust opening, as this may cause an electric shock, fire or damage to the appliance.
5. This appliance is not intended for use by persons (including children) with reduced physical, sensory or mental capabilities, or lack of experience and knowledge, unless they have been given supervision or instruction concerning use of the appliance by a person responsible for their safety.
6. Children should be supervised to ensure that they do not play with the appliance.
7. The heater must not be located immediately below a socket-outlet;
8. Do not use this heater in the immediate surroundings of a bath, a shower, or a swimming pool;
9. If the supply cord is damaged, it must be replaced by the manufacturer, its service agent, or similarly qualified persons in order to avoid a hazard;
10. Do not use your appliance with an extension cord unless it has been checked and tested by a qualified electrician or electrical supplier.
11. Do not use the appliance for any other purpose than its intended use.
12. Do not position the appliances in close proximity to curtains or other combustible materials. Keep combustible material such as furniture, cushions, bedding, paper, clothes, curtains etc. at least 1.0m away from the heater.
13. Do not operate in areas where gasoline, paint or other flammable liquids are used or stored.

**CAUTION: In order to avoid a hazard due to inadvertent resetting of the thermal cutout, this appliance must not be supplied through an external switching device such as a timer, or connected to a circuit that is regularly switched on and off by a utility.**

**WARNING: IN ORDER TO AVOID OVERHEATING, DO NOT COVER THIS HEATER**

***Read all instructions before using this unit. Keep them for future reference.***

## Specifications

<b>Model</b>	OPM15E	OPM20E	OPM24E
<b>Rated Voltage</b>	240V / 50Hz	240V / 50Hz	240V / 50Hz
<b>Watts</b>	1500W	2000W	2400W
<b>Controls</b>	Electronic & Remote	Electronic & Remote	Electronic & Remote
<b>Thermostat</b>	✓	✓	✓
<b>Heating Element</b>	Micathermic	Micathermic	Micathermic
<b>Settings</b>	3 settings: Low, High and Auto	3 settings: Low, High and Auto	3 settings: Low, High and Auto
<b>Timer</b>	✓	✓	✓
<b>Wall Mountable</b>	✓	✓	✓
<b>Castors</b>	✓	✓	✓
<b>Safety Features</b>	Tilt switch	Tilt switch	Tilt switch
<b>IP Status</b>			
<b>Measurements (l x h x d mm)</b>	785 x 475 x 202	900 x 475 x 202	1045 x 475 x 202
<b>Nett Weight (kg)</b>	5.5	6.2	6.9
<b>Warranty</b>	2 year replacement	2 year replacement	2 year replacement

## Assembly Instructions

Remove all items of packaging from the panel. As this convector panel heater is designed to be wall mounted OR freestanding please follow the below instructions according to your choice:

## TO WALL MOUNT THE PANEL

### Where to install the heater?

1. Ensure the safety zones (mm) in following figure are kept free (see Figure 1).
2. The panel convector must not be installed immediately below a wall socket. The heater must be connected to a socket outlet or permanent terminal box at least 10cm to one side of the heater (see Figure 2).
3. If the heater is installed in the Bathroom or in humid area, the socket outlet or permanent terminal box must conform to the IP24 requirement (please consult an electrician for further details).
4. The panel convector must not be installed near a draught likely to affect the control settings (under a ventilating fan, etc.)

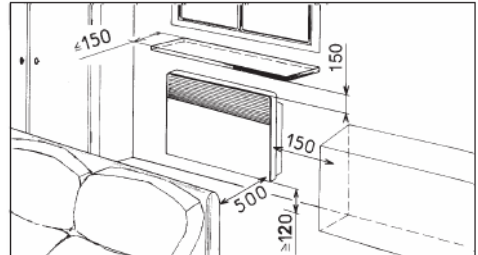


Figure 1.

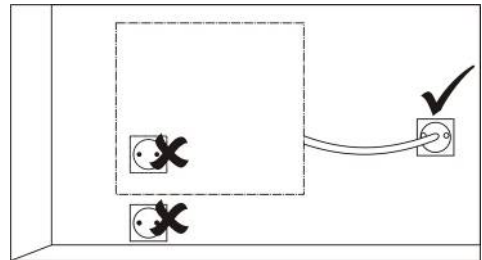


Figure 2.

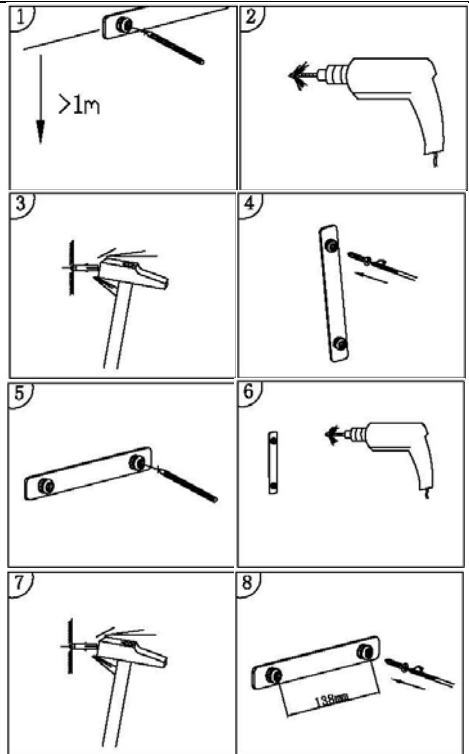
### Attaching the wall mounting bracket

#### What you will need:

1. Screwdriver
2. Pencil/pen to mark the drill holes on the wall
3. Drill & hammer
4. 2 x screws for fixing (Suggest 4mm expansion screws for most installations).

**IMPORTANT:** Only use the wall mounting bracket supplied with the unit. For your convenience, the wall mounting bracket is oriented centrally on the back of the unit.

1. Using the wall mounting bracket as a template for positioning, place the bracket against the wall with the hole approx 1m above the floor. Mark the screw-hole through the hole in the bracket.
2. Drill the first hole as marked.
3. Use a hammer to tap in a wall plug for the screw (if required).
4. Screw in one side of the bracket.
5. Hold the bracket horizontal against the wall to mark the second drill hole. Release the bracket.
6. Drill the second hole as marked.
7. Use a hammer to tap in a wall plug for the screw (if required).
8. Screw in the second side of the bracket and secure fully.
9. The bracket is now ready for the product to be mounted onto it.
10. To remove the unit reverse the above operation.

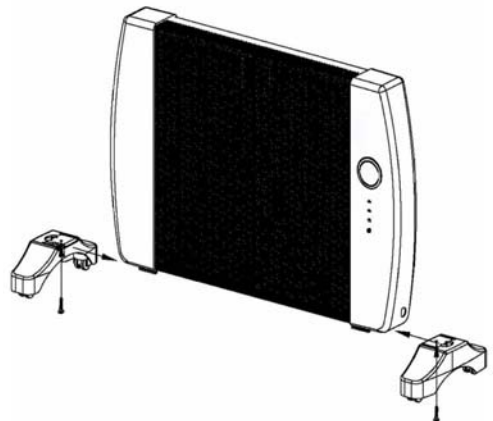


## To attach the castors to use the panel as a portable heater

### Parts list

- Castor sets (2)
- Screws (2)

1. Turn the body of the unit upside down, with the front of the unit facing away from you.
2. Slide one castor set from the edge towards the middle of the unit.
3. Secure with one of the screws provided.
4. Repeat for the second castor set.
5. Turn the unit back to an upright position before use.



---

## Operating Instructions

Before connecting this product to the power supply:

1. Be sure to place the convection heater on a flat surface.
2. Set the temperature control to low.
3. Set the power switch to off.

### Switching on the Unit

The unit may be switched on (setting **I**) or off (setting **O**) by using the switch (2) on the right side panel.

### Setting the time on the unit

1. When the unit is first switched on you can set the time by pressing the **UP** and **DOWN** buttons until the correct time is reached.
2. The **UP** button adds 1 hour per press.
3. The **DOWN** button adds 1 minute per press.
4. The time will continue to be displayed except when the **ON/OFF TIMER** is set.
5. The time display is a 24hr clock.

### Setting the temperature

1. Press the **SET** button once followed by the **UP** and **DOWN** buttons.
2. The **UP** button increases the temperature by 1 degree per press.
3. The **DOWN** button reduces the temperature by 1 degree per press.
4. The temperature can be set between 5° and 35°.
5. The temperature can be set when the unit is in **LOW**, **HIGH** or **AUTO** modes.

### Selecting the heating mode

1. Press the **MODE** button to change the **LOW**, **HIGH** or **AUTO** modes.
2. **LOW** mode will heat the room to the temperature set using approximately 1200W.
3. **HIGH** mode will heat the room to the temperature set using 2400W.
4. **AUTO** mode will alternate between the **LOW** and **HIGH** settings as required to reach and maintain the temperature set.

## **ON / OFF Timer**

### **Timer ON**

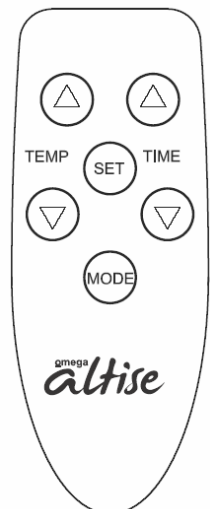
1. Press the **SET** button twice. The time display will flash along with the word **ON** (left of the time display).
2. While the time display is flashing press the **UP** and **DOWN** buttons to reach the time in hours until you want the unit to start.
3. The **UP** button adds 1 hour per press.
4. The **DOWN** button adds 1 minute per press.
5. Once the time display stops flashing it will begin counting down to turning the unit on.
6. Press the **SET** button twice to cancel the **ON** timer.

### **Timer OFF**

7. Press the **SET** button 3 times. The time display will flash along with the word **OFF** (left of the time display).
8. While the time display is flashing press the **UP** and **DOWN** buttons to reach the time in hours until you want the unit to stop.
9. The **UP** button adds 1 hour per press.
10. The **DOWN** button adds 1 minute per press.
11. Once the time display stops flashing it will begin counting down to turning the unit off.
12. When the OFF timer expires, the unit will switch off and the display will show **"88:88 END"**.
13. Press the **SET** button 3 times to cancel the **OFF** timer.

## **Remote Control**

1. The remote will not turn the power on. You will need to switch the unit on and off using the switch on the right side panel.
2. **SET THE TIME:** Press the "▲" "▼" on the right of the remote (marked "TIME").
3. **SET THE MODE:** Press the **MODE** button to cycle between LOW, HIGH, and AUTO.
4. **SET THE TEMPERATURE:** Press **SET** once. While the display is flashing press the "▲" "▼" on the left side of the remote (marked "TEMP"). Each press of buttons will increase or decrease the set temperature by 1 degree accordingly. When the display stops flashing the temperature is set.



5. **SET THE TIMER ON:** Press the **SET** button twice. The time display and the word **ON** will flash. While the time display is flashing press the “▲” “▼” buttons to reach the time until you want the unit to start. The “▲” button adds 1 hour per press, the “▼” button adds 1 minute per press. Once the time display stops flashing it will begin counting down to turning the unit on. Press the **SET** button twice to cancel.
6. **SET THE TIMER OFF:** Press the **SET** button three times. The time display and the word **OFF** will flash. While the time display is flashing press the “▲” “▼” buttons to reach the time in hours until you want the unit to stop. The “▲” button adds 1 hour per press, the “▼” button adds 1 minute per press. Once the time display stops flashing it will begin counting down to turning the unit off. When the OFF timer expires, the unit will switch off and the display will show “88:88 END”. Press the **SET** button three to cancel.

## **Safety Features**

### **Safety Tilt Switch:**

As a safety measure, the unit will shut off in the event of it being knocked over. Should this occur, turn the heater off and place it back in the upright position, then switch it back on.

### **Thermal Cut off Protection:**

If the unit reaches extremely high temperatures, the unit will temporarily switch off. If this occurs, turn the heater off, unplug it. Wait five to ten minutes for the unit to cool down then inspect the unit and remove any objects on or adjacent to the heater that may cause high temperatures, for example a build up of dust on the rear inlet panel. After it has cooled down and you have removed any objects you may plug the unit back in and resume normal operation.



## **Care and Maintenance**

1. Always disconnect the cord from the electrical outlet when cleaning your heater.
2. Light accumulated dust may be removed from the heater with a soft cloth or vacuum cleaner using the dusting brush attachment.
3. Wipe the exterior surfaces of the heater occasionally with a cloth moistened (not dripping wet) with a mild soap solution. Dry the case thoroughly with a soft dry cloth before operating the heater.
4. Avoid the use of gasoline, benzine, thinner etc as they may result in damage to the heater.
5. Store the heater in a clean dry place when not in use.



**CAUTION!** Do not immerse the heater in water or allow water to drip into the interior of the heater housing as this could create a fire or electric shock hazard.



**WARNING!** Do not attempt to open or repair the heater yourself. Doing so could void the warranty and cause damage or personal injury.