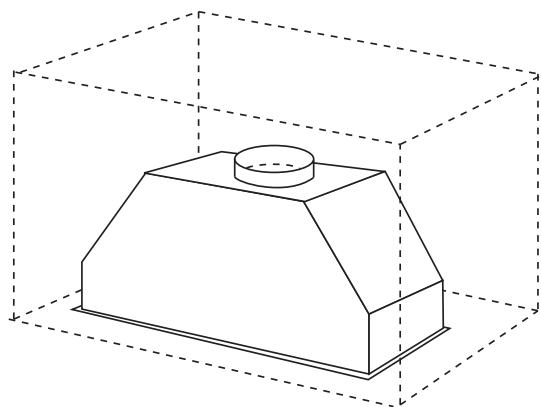




finish	satin stainless steel catchment frame
size	700mm W x 245mm D x 245mm H
installation	built into overhead cabinetry — corner, wall, island
capacity	530m ³ /hr max airflow
air extraction	duct direct to atmosphere or recirculate to kitchen, 150mm ducting required
noise rating	34–55 dBA
illumination	two 40 watt incandescent, separate button
speeds	four — separate buttons
delay stop	5-minute delay stop selection — separate button
filter prompt	30-hour use LED prompt to clean filters
filtration	two stainless steel and aluminium 4-ply grease filters, removable and washable
supplied	one-way butterfly valve — removable
accessory	optional activated charcoal filter pair for recirculation, Part No 08999801
warranty	two years parts and labour



The OR701UXB is a concealed canopy to be built into overhead cabinetry, whether it be wall, corner or island design

APPLICATION

The OR701UXB extraction/filtering unit is suitable for very varied installations. An island or wall-mounted canopy can be designed incorporating these rangehoods. Consider, as well, one of these units for a difficult situation such as a corner or, when renovating, the overhead cabinet widths are not the normal 60cm or 90cm, making more conventional rangehoods impractical. The completely concealed design might alone be the sole aspect of a decor solution.

PERFORMANCE

Highly-efficient air extraction of up to 530 cubic metres an hour true (net) ensures the very swift removal of cooking vapours, odours and heat. The higher speed selections are perfect for the more vigorous styles of cooking such as stir frying, griddle cooking and boiling, the lower speeds at the touch of a button are perfect for simmers.

QUIETNESS

34 to 55 dBA. The motor/impellor encasements are smooth-walled to minimise air drag and, hence, noise. All metal joints are welded to reduce vibration.

SAFETY

Thermal overload protection on motor, fire retardant hardened metal and mesh, VO self-extinguishing plastic for motor housing and internal flue.

MAINTENANCE

No tools required — easy lift-out pair of grease filters for washing. For light replacement, simply rotate the decorative flange for access to halogen globes.

DUCTING

Direct ducting to atmosphere ensures the maximum removal of grease/oil/particle-laden vapour plus the odours and, very importantly, the heat, resulting in a cleaner, cooler, more comfortable work area.

RECIRCULATION

When the cooking vapours cannot be ducted to atmosphere, the filtered air can simply be redirected back into the kitchen via a duct pipe through the overhead cabinetry.

CHARCOAL FILTERS

These are purchasable accessories. One each is clipped to either side of the centrifugal motor and are designed to absorb and diminish cooking odours. Periodic inspection is recommended before replacement. They are optionally used for recirculation only. The activated charcoal filters are not to be washed.

DUCTING MATERIAL

Smooth internal walled duct pipe lengths ensure the most efficient air movement and quieter operation. Consider either high temperature rated PVC or galvanised sheet metal piping. The flexible ducting can be ideal for a very short, tight run.

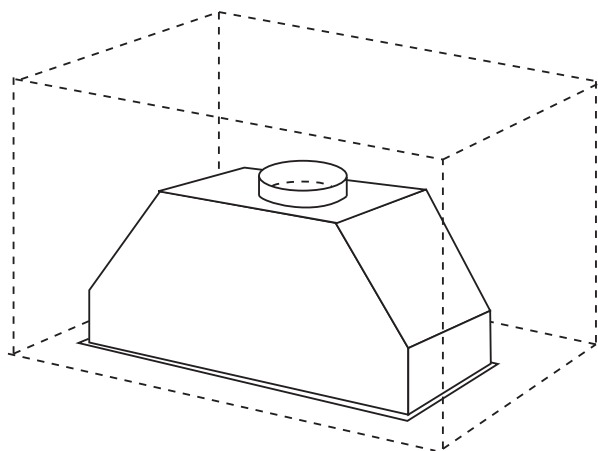
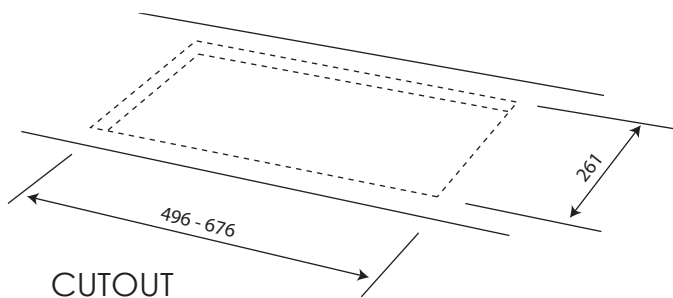
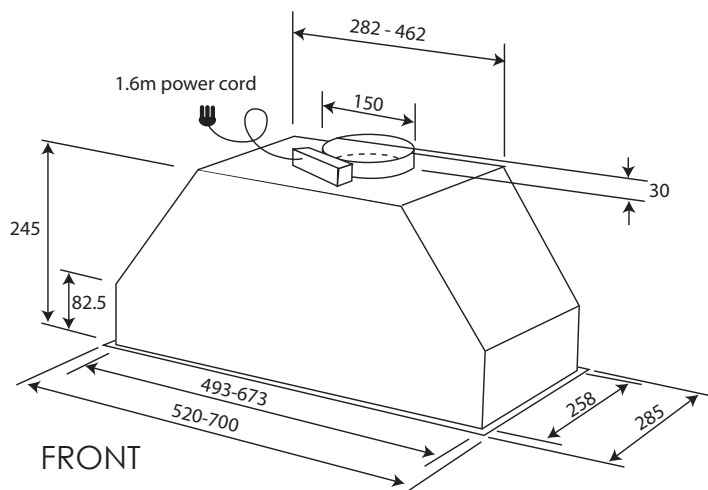
The rangehood's air exit aperture is designed for 150mm (6") ducting; however, a 125mm diameter (5") adaptor can be purchased for optional use.

DELAY STOP

Ideally, a rangehood should run for several minutes after all cooking is ceased in order to drag through residual vapours and odours. By selecting the delay stop button at the end of the cooking, the rangehood will turn the motor off in five minutes as well as the lights if they were left on.

CLEANING PROMPT

After 30 hours use the LED window will prompt visually to inspect the grease filters for possible cleaning. Simply use the Reset button to clear the LED window.



dimensions 245mm H x 700mm W x 285mm D
net weight 11.5kg
packaged 370 x 810 x 340 = 0.102m³
gross weight 12kg
capacity 530m³/hr max airflow
air extraction duct or recirculate

electricity supply 240 volt 50 Hz
electrical connection connected power cord with 3-pin plug suitable for standard 10 amp GPO

power cord length 1.6 metre
motor 250 watt centrifugal motor, double impellor double air uptake

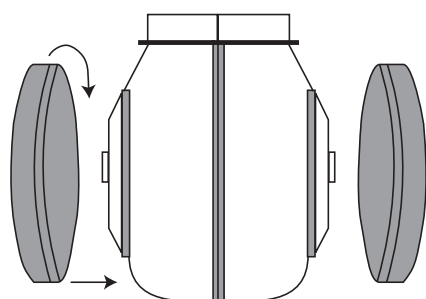
illumination 2 x 40 watt incandescent
maximum current supplied 0.98 amps

- instructions for installation, operation and maintenance
- one-way butterfly valve fitted to exit collar (removable)
- 150mm/125mm diameter adaptor
- fixing screws

optional pair of activated charcoal filters for optional use when recirculating, Part No 08999801

SPEED	1	2	3	4
net air capacity m ³ /hr	230	340	460	530
pressure mm H ₂ O	23	24	25	26
wattage	65	80	105	155
noise dBA	34	38	49	55

The OR701UXB concealed canopy to be built into overhead cabinetry whether it be wall, corner or island design



optional fitment of charcoal filters for recirculation installation

NB: drawings are not to scale — they are to assist only