

Vacuum Cleaner user manual

- * Before operating this unit, please read the instructions carefully.
- * For indoor use only.

English

imagine the possibilities

Thank you for purchasing a Samsung product.
To receive a more complete service,
please register your product at
www.samsung.com/register





safety information




SAFETY INFORMATION

- Before operating the appliance, please read this manual thoroughly and retain it for your reference.
- Because these following operating instructions cover various models, the characteristics of your vacuum cleaner may differ slightly from those described in this manual.

CAUTION/WARNING SYMBOLS USED

| | |
|---|---|
|  | Indicates that a danger of death or serious injury exists. |
|  | Indicates that a risk of personal injury or material damage exists. |

OTHER SYMBOLS USED

| | |
|---|--|
|  | Represents something you must NOT do. |
|  | Represents something you must follow. |
|  | Indicates that you must disconnect the power plug from the socket. |

safety information

IMPORTANT SAFEGUARDS

- Read all instructions carefully. Before switching on, make sure that the voltage of your electricity supply is the same as that indicated on the rating plate on the bottom of the cleaner.
- **WARNING:** Do not use the vacuum cleaner when rug or floor is wet.
Do not use to suck up water.
- Close supervision is necessary when any appliance is used by or near children. Do not allow the vacuum cleaner to be used as a toy. Do not allow the vacuum cleaner to run unattended at any time. Use the vacuum cleaner only for its intended use as described in these instructions.
- Do not use the vacuum cleaner without a dust bag. Change the dust bag before it is full in order to maintain the best efficiency.
- Do not use the vacuum cleaner to pick up matches, live ashes or cigarette butts. Keep the vacuum cleaner away from stoves and other heat sources. Heat can deform and discolour the plastic parts of the unit.
- Avoid picking up hard, sharp objects with the vacuum cleaner as they may damage the cleaner parts. Do not stand on the hose assembly. Do not put weight on the hose. Do not block the suction or the exhaust port.
- Switch the vacuum cleaner off on the body of the machine before unplugging from the electrical outlet. Disconnect the plug from the electrical outlet before changing the dust bag or dust container. To avoid damage, please remove the plug by grasping the plug itself, not by pulling on the cord.
- This appliance is not intended for use by persons (including children) with reduced physical, sensory or mental capabilities, or lack of experience and knowledge, unless they have been given supervision or instruction concerning use of the appliance by a person responsible for their safety.
- Children should be supervised to ensure that they do not play with the appliance.
- The plug must be removed from the socket outlet before cleaning or maintaining the appliance.
- The use of an extension cord is not recommended.
- If your vacuum cleaner is not operating correctly, switch off the power supply and consult an authorized service agent.
- If the supply cord is damaged, it must be replaced by the manufacturer or its service agent or a similarly qualified person in order to avoid a hazard.
- Don't carry the vacuum cleaner by holding the hose.
Use the handle on the vacuum cleaner set.
- Unplug the cleaner when not in use. Turn off the power switch before unplugging.

contents

ASSEMBLING THE CLEANER 05 Assembling the Cleaner

05

OPERATING THE CLEANER 06 Power cord
06 On/Off Switch
07 Suction-control

06

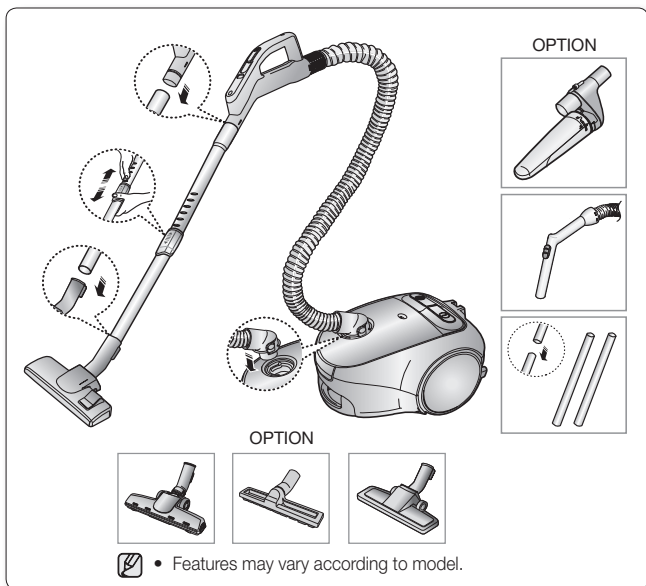
MAINTAIN TOOLS AND FILTER 08 Using accessory
09 Maintain floor tools
09 Dust full indicator
10 Cyclonic filter
(only cyclonic filter types)
11 Changing the dust bag
12 Cleaning inlet filter
12 Cleaning outlet filter

08

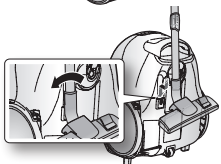
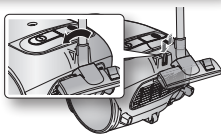
TROUBLE SHOOTING

13

assembling the cleaner

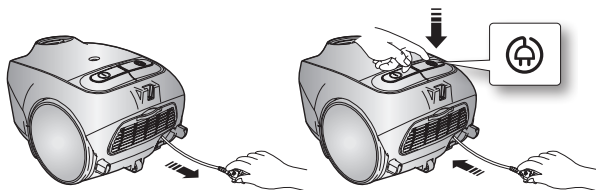



- ★ • For storage, park the floor nozzle.



operating the cleaner

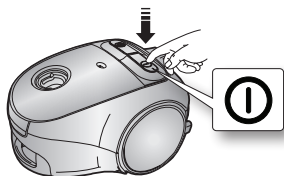
POWER CORD



-  • When removing the plug from the electrical outlet, grasp the plug, not the cord.



ON/OFF SWITCH

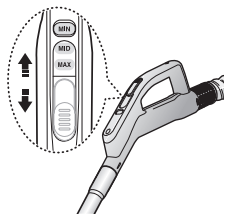


operating the cleaner

SUCTION-CONTROL

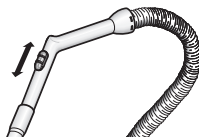
1) SLIDE CONTROL TYPE ONLY

- To reduce suction for cleaning draperies, small rugs, and other light fabrics, pull the knob until MIN.



2) ON/OFF TYPE ONLY

- To reduce suction for cleaning draperies, small rugs, and other light fabrics, pull the tap air until the hole is open.

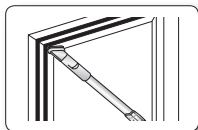


maintain tools and filter

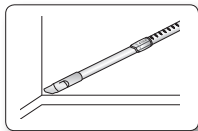
USING ACCESSORY

Accessory

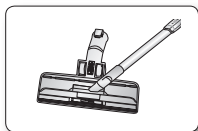
- Dusting brush for furniture. shelves, books, etc.



- Crevice tool for radiators, crevices, corners, between cushions.

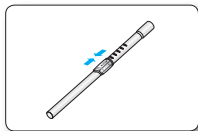


- For efficiency. clean Floor Nozzle with Crevice Tool.

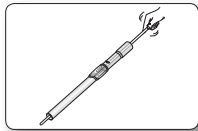


Pipe (Option)

- Adjust the length of the telescopic pipe by sliding the length control button located in the center of the telescopic pipe back and forth.



- To check for blockages, separate the telescopic pipe and adjust to shorten. This allows for easier removal of waste logging the tube.



maintain tools and filter

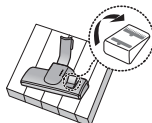
MAINTAIN FLOOR TOOLS

2-Step Brush (Option)

- Adjust the inlet lever according to the floor surface.

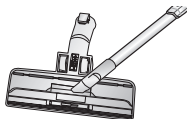


Carpet Cleaning



Floor Cleaning

- Remove waste matter completely if the inlet is blocked.



Pet Brush (Option)

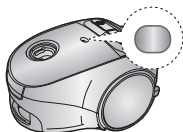
For improved pick-up of pet hair and fibre on carpets.

Frequent vacuuming of hair or pet fur may cause a falling-off of the rotation due to matters tangled around the drum. In this case, clean the drum with care.



DUST FULL INDICATOR

When the indicator color has changed Please replace the dust bag.



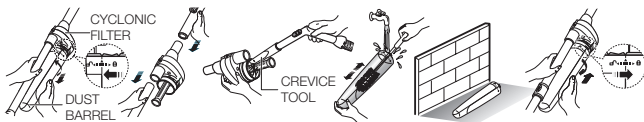
maintain tools and filter

CYCLONIC FILTER(ONLY CYCLONIC FILTER TYPES)

You can use a dust bag in your cleaner for a long time thanks to the Cyclonic Filter system and it maintain the maximum cleaning efficiency. The larger particle of dust filtered from Cyclonic Filter remain in Dust Barrel when suctioned air and dust revolves in the Cyclonic Filter. So the dust bag contains only smaller ones.

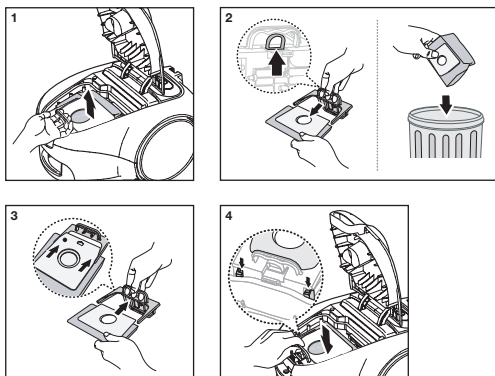
When the Dust Barrel is filled with dust up to the indicating line, it needs disposing and cleaning. Dust Barrel can be cleaned in water.

1. Turn the Dust Barrel to the left and pull it.
2. Disconnect the Cyclonic Filter from extension wand and handle.
3. Remove thread and hair tangled around the net.
4. After cleaning the Dust Barrel and Cyclonic Filter,connect the Cyclonic Filter with extension wand and handle(washed part should be dried in the shade thoroughly before assembling).
5. Push and turn the Dust Barrel to the right. Adjust indicating marks each other carved on Dust Barrel and Cyclonic Filter.



maintain tools and filter

CHANGING THE DUST BAG



OPTIONAL

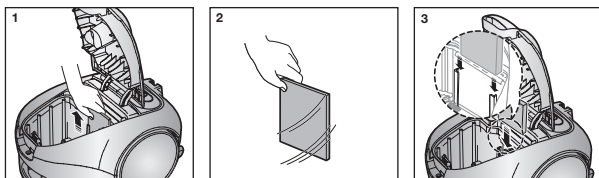
- For Cloth Bag


After using, if the cloth bag is full of dust, clean the cloth bag and use it again.

- You can purchase dust bags in the shops where you bought this vacuum cleaner.
Paper bag can be used as you prefer. (Paper-bag : VP-95B)

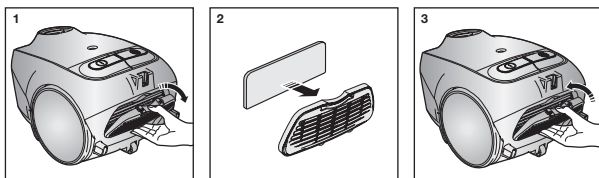
maintain tools and filter

CLEANING INLET FILTER



 Don't throw away the filter.

CLEANING OUTLET FILTER



trouble shooting

| PROBLEM | SOLUTION |
|--|--|
| Motor dows not start. | <ul style="list-style-type: none">• Check cable, pulg and socket.• Leave to cool. |
| Suction force is gradually decreasing. | <ul style="list-style-type: none">• Check for blockage and remove. |
| Cord does not rewind fully. | <ul style="list-style-type: none">• Pull the cord out 2-3m and push down the cord rewind button. |
| Vacuum cleaner dows not pick up dirt. | <ul style="list-style-type: none">• Check hose and replace if required. |
| Low or decreasing suction | <ul style="list-style-type: none">• Please check filter and, if required, clean as illustrated in the instructions. if filters are out of condition change them to new ones. |
| Body overheating | <ul style="list-style-type: none">• Please check filters, If required clean as illustrated in the instruction. |
| Static electicity discharge | <ul style="list-style-type: none">• Please decrease power suction. |

memo

memo



If you have any questions or comments relating to Samsung products, please contact the SAMSUNG customer care center.

| COUNTRY | CALL | OR VISIT US ONLINE AT |
|----------------|-----------------------|--|
| AUSTRALIA | 1300 362 603 | www.samsung.com/au |
| HONG KONG | (852) 3698-4698 | www.samsung.com/hk www.samsung.com/hk_en/ |
| MALAYSIA | 1800-88-9999 | www.samsung.com/my |
| SINGAPORE | 1800-SAMSUNG(7267864) | www.samsung.com/sg |