

SW50USP

Washing Machine user manual

imagine the possibilities

Thank you for purchasing a Samsung product.
To receive a more complete service,
please register your product at
www.samsung.com/global/register



sonli
.co
online appliance

features

- **Air Turbo Drying System**

- Air Turbo technology spins hard and fast so you can spend less time drying.
- Time Saving AIR TURBO saves your time, ensuring your clothes are dried 30%-40% faster than line drying alone. Especially during the rainy season and in high-humid weather, laundry that once took days to drip-dry, such as heavy jeans, bulky sweaters, and thick blankets are dried more rapidly.
- Easy-to-iron AIR TURBO is perfect for delicates and clothes made of synthetic fabrics. No more hanging and waiting. Simply iron straight-out-of-the washer, since AIR TURBO eliminates just enough moisture to keep clothes adequately damp for ironing.

- **Fuzzy Control**

Fuzzy control operates with best washing course by sensing the washload like artificial intelligence.

- **Transparent Window**

- This Transparent Window is the new concept to solve the curiosity of users to see inside of washing machine while operation.
While operation, the laundry progress inside of washing machine can be checked by looking through the transparent window.

- **Double Storm Pulsator- Less Tangle, Better Washing Performance**

- Tangle Free - Multi-dimensional water currents help clothes stay tangle free.
- Water current technology designed specifically to enhance washing performance. The power of tornado-like multi-dimensional water currents guarantee excellent washing performance.

- **Magic Filter**

This unique magic Filter ensures that all the lint inside the tub is captured for top quality filtering results to deliver consistently effective cleaning results.

- **Auto Restart**

The power is turned on automatically after power failure.

- **Softener Dispenser**

The Softener Dispenser releases the fabric softener at the appropriate time when the last rinsing proceeds.

- **CHILD-LOCK Function**

This is a device to protect children from being accidentally hurt while playing with the washer.

- How to start the Child-Lock function:
Press the "Power" button to go to an initial washing mode.
By pressing "Start/Hold" button, you start washing and in case Child Lock function is needed during the laundry Press both the "Rinse" and "Spin" buttons at the same times.(for 3 seconds) (Note: You cannot perform the function without the "Power" button on.)
- To release the function of Child-Lock: In case the "Child-Lock" is programmed, press both the "Rinse" and "Spin" buttons at the same time.

safety instructions

Please note that the following precautions for safety intend to prevent unpredictable danger and damage by helping the proper use in safety.

When using hot water in washing, please make sure that the water should not exceed 50°C.

- Plastic parts may be deformed or damaged, and an electric shock or a fire may take place.

WARNING



There might be serious injury or fatal accident when you violate this instruction.

- If the plug (power supply cord) is damaged, it must be replaced by the manufacturer or its service agent or a similarly qualified person in order to avoid a hazard.
- Do not pull the cord off or touch it with moist hands.
 - An electric shock or a fire may take place.
- Do not bend the power supply cord by force or press it with heavy things.
 - An electric shock or a fire may take place.
- Do not install the washer nearby electric implement or don't put a candle light or cigarette light on the washer.
 - A fire may take place.
- During operation, do not put your hands or metal materials under the washer.
 - You may be hurt by spinning board beneath the washer.
- Stay away from the washer when the bottom of the washer sinks into the water.
 - There might be an electric shock. Please wait until the water drains out completely.
- Do not put laundry stained with gasoline, benzene, or alcohol in the washer, and keep the materials away from the washer.
 - An explosion or a fire may take place.
- During spinning, don't put your hand in the spinning tub.
 - It may hurt your hands. If it does not stop within 15 seconds after you open the lid, call service agent immediately.
- This appliance has to be connected to the plug endurable to proper power consumption.
- This appliance has to be positioned so that the plug is accessible after installation.
- No user-serviceable parts inside. Refer any servicing to qualified service personnel.
 - Otherwise this may cause a mechanical error, electric shock, fire or physical damage.
 - The product warranty does not cover problems resulting from disassembling the product.
- Do not use this product for business purposes.
- For washing machines with ventilation openings in the base, that a carpet must not obstruct the openings.

safety instructions

CAUTIONS



There might be a slight injury or damage when you violate this instruction.

- Don't install it in the area with moisture or outdoor where it has rain or snow.
 - An electric shock or a fire may take place.
- Please unplug the power supply cord when you do not use it.
 - An electric shock or a fire may take place.
- If there is dust or water on the power supply plug and its connected part, please remove it completely.
 - An electric shock or a fire may take place.
- Do not make your children look into the inside of the washer.
 - If your child falls into the washer, their life could be in danger.
- Ventilate immediately without touching the power plug if gas is leaking.
 - An electric shock or a fire may take place if it catches flame.
- If the washer makes strange noise, smell or smoke, unplug it promptly and call service agent.
 - An electric shock or a fire may take place.
- When cleaning, don't spray water to the parts of the washer directly.
 - It may make its life span shorten.
Also an electric shock or fire may take place.
- Don't use several appliances together with an outlet.
 - A fire may take place due to unusual heat.
- Don't press the button with an awl or pin.
 - An electric shock or a fire may take place.
- Use the new hose-sets and old hose-sets should not be reused.
- If the damage is found on the current cord in use, it should be replaced by manufacturer, service center or authorized person in order to avoid the risk.
- Connect the grounding wire to the shell plate, and bury it under at least 25cm of earth: alternatively, connect the ground wire to the appropriate pin on a properly grounded power receptacle. Never connect the wire to a telephone line, lightning rod, or gas pipe. **option**
- If this appliance is supplied from a cord extension set or electrical portable outlet device, the cord extension set or electrical portable outlet device must be positioned so that it is not subject to splashing or ingress of moisture.
- This appliance is not intended for use by persons (including children) with reduced physical, sensory or mental capabilities, or lack of experience and knowledge, unless they have been given supervision or instruction concerning use of the appliance by a person responsible for their safety.
- Children should be supervised to ensure that they do not play with the appliance.
- The appliance is not intended for use by persons (including children) with reduced physical, sensory or mental capabilities, or lack of experience and knowledge, unless they have been given supervision or instruction concerning use of the appliance by a person responsible for their safety.
- If the appliance is supplied from a cord extension set or electrical portable outlet device, the cord extension set or electrical portable outlet device must be positioned so that it is not subject to splashing or ingress of moisture.



contents

SETTING UP YOUR WASHER

6

- 6 Description of part
- 7 Checking before washing and caring for garments
- 9 How to wash automatically depends on the laundry
- 10 Control Panel

MANUAL FUNCTIONS

15

- 15 Manual functions

INSTALLATION & MAINTENANCE

16

- 16 Environment
- 16 Levelling
- 16 Connecting the water supply hose
- 18 Assembling the rat protection panel
- 18 How to connect the drain hose
- 19 How to put the detergent in
- 19 How to add the fabric softener
- 19 Water supply connector filter
- 20 Cleaning the filter
- 20 How to clean the pump filter
- 20 Precautions

TROUBLESHOOTING

21

- 21 Troubleshooting

WASHING MACHINE WON'T WORK?

22

- 22 Washing machine won't work?

SPECIFICATION

23

- 23 Specification



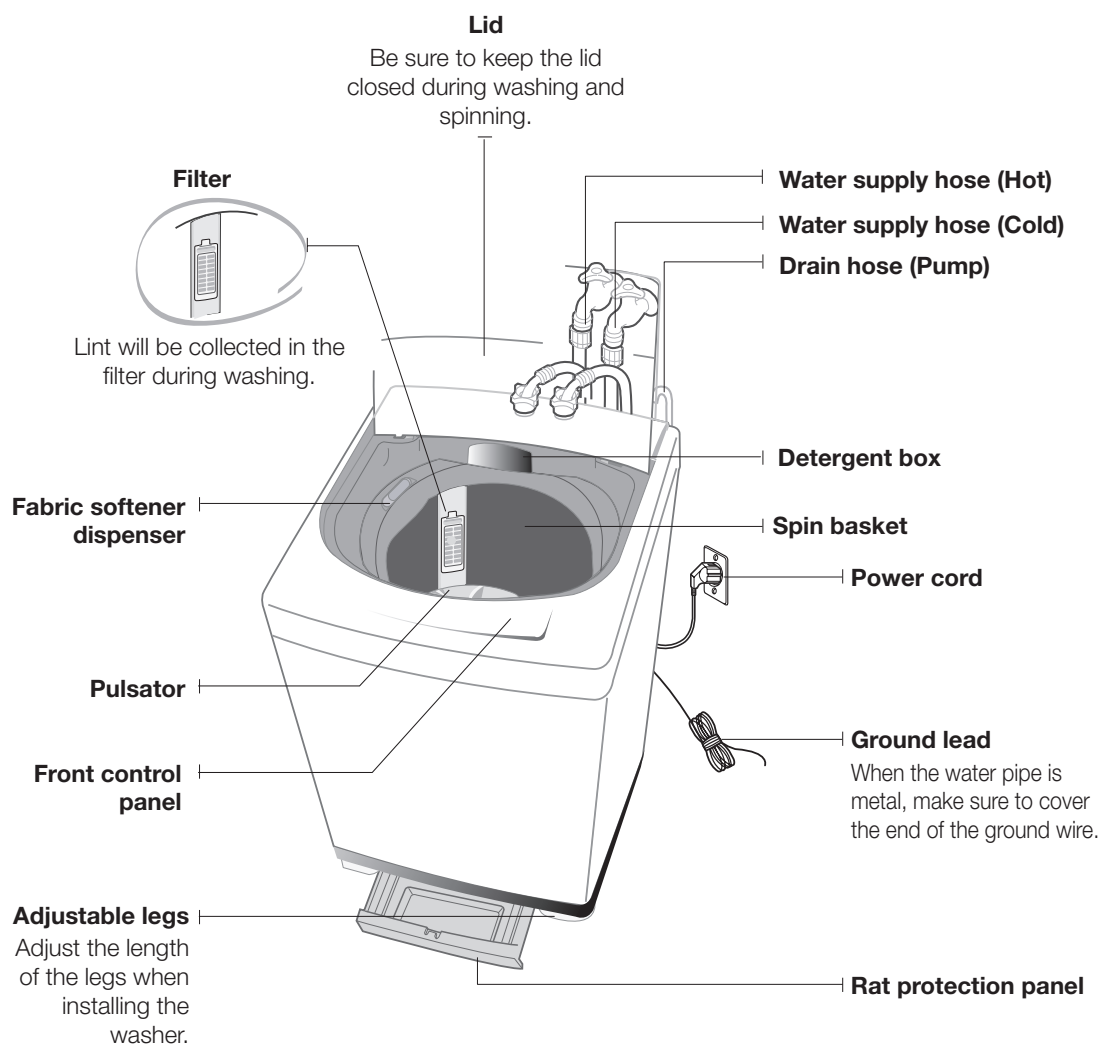
appliancesonline
Contents 5
Australia's largest online appliance

setting up your washer

DESCRIPTION OF PART

The User's Manual is for common use.

Make use of the User's Manual depending upon your washing machine model.



CHECKING BEFORE WASHING AND CARING FOR GARMENTS

Must follow the checkpoints in order to avoid machine problems or damages on garments.

- If the below problems are caused by customer's faults, separate service fee will be charged.

Checkpoints Before Starting Washing

Check if the clothes are bleaching or not.

- Add liquid detergent to a white towel and the garment where you can't notice well. Then, rub together strongly. Check if the color transferred to the towel.
- Be careful for scarves and imported clothes since they are easily discoloring.
- Check for stains or partial dirt.
- If stains are found, use the towel wet with detergents to rub on in a single direction.
- Before washing, the sleeves, collar, dress hem and pockets are pre-treated by brushing with detergents.

The wrinkle-processed clothes made of wool are specially treated by fixing them with threads before washing. The threads shall be removed after the clothes are dried.

Not washable laundry

Clothes those are easily transformable even by soaking in water.

- Even by soaking in water, neckties, brassieres, jackets, suits and coats can be easily transformed like shrinking and discoloring on the garment surfaces because they are mostly made of rayon, polynosic, cuff and their blend fabrics.
- The wrinkle-processed, embossed, or resin processed products are easy to transform even by soaking in water.
- Easily discoloring products made of cotton and wool, wrinkled silk, leather products, leather accessory, leather ornamented clothes and its accessory.
- Don't wash those clothes without handling guideline or material indication tag.

About Detergent

- When detergents are not dissolving well, use warm water (about 40°C) to dissolve the detergent.



CAUTION

- Use an appropriate amount.
- Even if excess amount of detergent is used, there is not much difference in washing result. It may cause damages to the garments because rinsing is not enough.
- The bleaching agent may cause damages to garments since it is strong alkali.
- Do sufficient rinsing because the powder detergent is easily remained on the garments causing bad odors.
- If too much detergent is used or cold water is used, it doesn't dissolve completely and remain on the garments, hose or spin basket, causing contamination on clothes.
- In case of reserved washing, detergents must be put in the detergent box. If the powder detergents are spread on laundry directly, it may cause discoloration.



appliancesonline.co

Setting up your washer 7 Australia's largest online appliance

setting up your washer

CARING FOR CLOTHES BEFORE WASHING

Take out personal belongings from pockets.

- Caution, Check the pockets! Hairpins and coins cause damages to clothes and washing machine. They make noise and problems to the machine. Must check the pocket.



If pants zippers are open while washing, the spin basket may be damaged. The zipper should be closed and fixed with a string before washing.

- Metal on the clothing may cause damage to the clothes and the tub.
- Turn clothing with buttons and embroidered clothes inside out the before washing them.
- Clothing with long strings may become entangled with other clothes, and may cause damage to the clothing. Be sure to fix the strings before washing.



Waterproof clothes (Ski Wear, Diaper Covers, Footboards) are not allowed for washing.

- This may cause the laundry to be ejected or cause the washing machine to vibrate abnormally, which may result in personal injury or damage the washing machine, the floor or the clothing. (Diapers, waterproof clothing, raincoats, umbrella covers, skiwear, car cover sheets, and sleeping bags, etc.).
- When the tub rotates, water may become trapped in the waterproof clothing or fabric and can collect in a corner, causing abnormal vibrations. In addition, the laundry rises and may be ejected and cause personal injury.

Shake the dirt or soils from clothes.

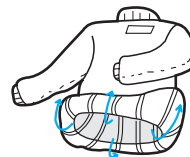
- Soil and sands may rub delicate garments to cause damages and the washing result may be unsatisfactory.

Do pre-washing for white socks, sleeves, and collars before the main washing.

- For stains and dirt on collars, sleeves, hems, and pockets, apply some detergent to them and apply it lightly with a brush before washing.
- Use powdered or liquid detergent. Do not use soap as the tub may become dirty from the dirt on it.

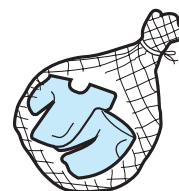
Turn inside out for those nappy clothes before washing.

- If clothes have too much foreign matter, separate them for washing. Other clothes may pick up those dirty matters (dirt, thread).
- Wash black colored clothes and cotton towels separately. If they are washed together, towels may pick up dirty matters. Check before washing.



Cashmilon and those garments having big volume and lightweight (eg. Lase-decorated clothes, lingerie, nylon stocking, synthetic fabrics etc.) may rise and cause damages to the clothes and problems to the machine. Use the laundry net or wash them separately.

- Must put those long stringed clothes, lase-worked clothes, bed cover sheet, wool clothes into a laundry net before washing.
- Put delicate clothes in the laundry net.
- Use only those commercial laundry net for washing.



Curtains, floating garments or blue jeans shall be pressed not to float on the water.

- If they are floated on the water, press Start/Hold button to stop and press them to sock in the water. If the washing goes on with clothes floating on the water, it may cause damages to the clothes and the washing machine as well as unsatisfactory washing result.



appliancesonline.co

Australia's largest online appliance

HOW TO WASH AUTOMATICALLY DEPENDS ON THE LAUNDRY

Before starting washing, check the following;

- Connect the water supply hose to the water tap. Leave a tap open. Plug the power cord in. Make sure to lay down the drain hose.

Washing for the first time

Before washing clothes for the first time, you must run a complete cycle without clothes.

To do this:

1. Press the **Power** button.
2. Open the detergent drawer and insert a little detergent.
3. Turn on the water supply to the washing machine.
4. Press the **Start/Hold** button.
This will remove any water from the manufacturer's test run remaining in the machine.

Special notes!


Automatic Sensing Function

- At every course (except Clean tub, delicate course) the amount of laundry is automatically sensed and then appropriate water level, washing time, rinsing cycle, and spinning time are automatically selected for automatic washing.
- After the power is on, a course is selected and **Start/Hold** button is pressed. Then, the washing board starts spinning without water. This action senses how much laundry is in the washing basket, not a machine problem. After this sensing process, water supplies automatically.

Adding Detergent and Softener

- It senses the amount of laundry and indicates the water level and amount of detergent. Then, it starts water supply right away.
- During the water supply, it is possible to open the detergent box and add detergent. However, it is better to press **Start/Hold** button to stop water supply and add detergent. Close the lid and press **Start/Hold** button again. This way is much more convenient.
- If the softener is inserted in the softener dispenser, it automatically adds in at the last rinsing cycle.

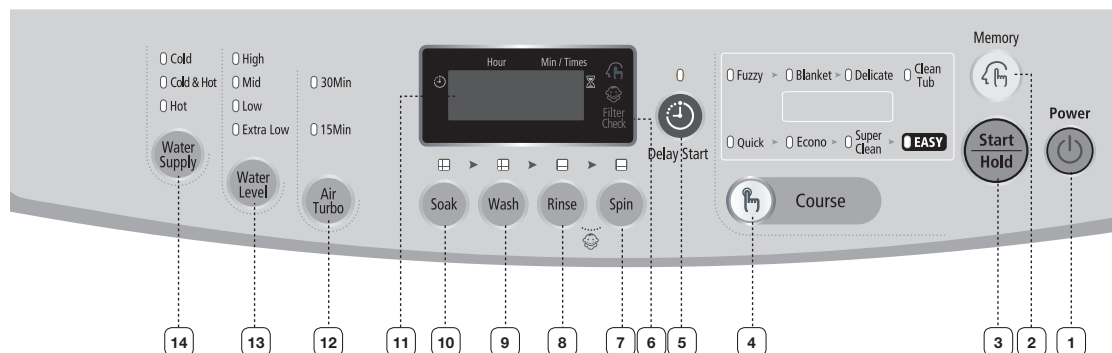
Put the laundry into the washer and add detergent, too.

- Be careful not to overload. Use right detergent for the fabrics you are washing.
-  If the lid is open while running, the washing machine is stopped automatically for safety. (Except, water supply continues while the lid is open.)
- When hot water is selected, both cold and hot water are supplied for the first 20 seconds in order to protect the clothes.
- Possible to control the washing time, rinsing cycle, and spinning time at every course during the washing.

setting up your washer

CONTROL PANEL

For more details, see control panel of your washing machine.



1	POWER BUTTON	Press this button once to operate. Press it again to turn the power off.
2	MEMORY BUTTON	Press this button once to operate. Manually select the functions to use. (Course, Air Turbo, Rinse count) Your choices are automatically saved when pressing the Start/Hold button. To use a memorized course, press the Memory button and then press the Start/Hold button. - The memorized functions will be displayed on the panel. Insert some detergent and rinse detergent in proportion to the water level and close the cover. This function allows frequently used functions to be memorized so that they can be easily used when needed.
3	START/HOLD BUTTON	Use to pause and restart the operation. To change the washing procedure during an operation, press this button to stop, and again to restart after changing the procedure.
4	COURSE SELECT BUTTON	Each time the button is pressed, the washing course changes; Fuzzy → Blanket → Delicate → Clean Tub → Quick → Econo → Super clean → Easy
5	DELAY START BUTTON	Press this button to finish the wash at a specified time. Turn off your washing machine to cancel a reserved delay start. You can set the delay start time from between 3 to 18 hours.
6	FILTER CHECK	When the wash is finished, the warning lamp lights up on the filter check . When the door is opened, it turns off. (This is not a fault.) When the Magic filter is clogged, foreign materials may start sticking to the laundry. To ensure a clean wash, please remove foreign materials from the filter after every wash.
7	SPIN BUTTON	Press this button to perform a spin cycle only or to adjust the spin time. You can set the spin time from between 1 to 9 minutes. When only a spin is selected, the spin time will be different from the total remaining time. This is because the total remaining time includes the actual spin time and the times for water draining and stopping.
8	RINSE BUTTON	Press this button to perform a rinse only or to adjust the rinse count. You can set the rinse count up to five times.

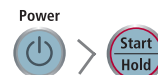
9 WASH BUTTON	Press this button to perform a wash only or to adjust the washing time. You can set the wash time from between 4 to 30 minutes.
10 SOAK BUTTON	Press this button to perform a soak wash. This function cannot be selected during a Delicate course. Soaking is automatically applied during a Clean tub course. You can set the soak time from between 10 to 60 minutes.
11 REMAINING TIME, DELAY START TIME, ERROR DISPLAY	Displays the remaining wash time. Displays the reserved delay start time. Displays the error state if a problem occurs in the washing machine so that you can take action.
12 AIR-TURBO BUTTON	Press this button to fast dry your laundry. Each time the button is pressed, the selection changes in the following order. 30 Min → 15 Min → Off → 30 Min This function can only be selected if a spin cycle is set.
13 WATER LEVEL BUTTON	The water level is automatically adjusted. However, you can select the water level manually by pressing this button. Mid → High → Mid → Low → Extra low → Low → Mid
14 WATER SUPPLY BUTTON	Each time this button is pressed, the type of water is selected as follows, Cold → Cold & Hot → Hot → Cold

setting up your washer

FUZZY COURSE

Selects the best washing course automatically.

1. Press the **Power** Button to “On”.



2. Press the **Start/Hold** button.

Water level is selected automatically. Washing rinsing, and spinning follow.

If you want to pause, press the **Start/Hold** button again. You can change the course when paused.

3. Close the lid.

BLANKET COURSE

(Big volume laundry like blanket and bed cover sheets)

1. Press the **Power** button to “On”.



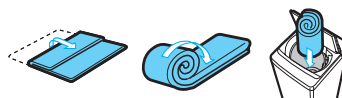
2. Press the **Course** select button once.

3. Press the **Start/Hold** button.

Water level is selected automatically. Washing, rinsing, and spinning follow. If you want to pause, press the Start/Hold button again. You can change the course when paused.

4. Close the lid.

- Fold those big volume laundry (blanket and bed cover sheets) in the following way before adding into the spin basket.
- Do not wash the electric blanket and carpets.
- Get a laundry net for those light and big volume laundry (eg. Cashmeres) because they might rise in the water and get damaged.



DELICATE COURSE

Washable sweater, cardigan, delicate clothes etc.

1. Press the **Power** button to “On”.

2. Press the **Course** select button twice.

3. Press the **Start/Hold** button.



Washing, rinsing, and spinning follow. If you want to pause, press the **Start/Hold** button again. You can change the course when paused.

4. Close the lid.



- You can only select cold water.
- The last spin operates lightly to prevent wrinkles.
- Use the detergent indicated in the laundry.

- In the Delicate course, the **Soak & Air Turbo** cannot be selected as it could damage the washed items.

CLEAN TUB COURSE

Use this course to clean the tub. It will keep the tub clean and sanitary.

1. Press the **Power** button to “On”.
2. Press the **Course** select button three times.
3. Press the **Start/Hold** button.
4. Add a dedicated detergent and close the lid



- Never place laundry in the tub when cleaning inside the tub, as this can cause discoloration or damage to the laundry.
- When doing the laundry after cleaning the tub, you may find some impurities. These are just detergent residues and impurities after the tub cleaning. Perform the rinse cycle two to three times.
- The Soak function (20 minutes) is set automatically.
- The water level is set to Mid early on and then changed to High during the rinse.

KEEPING THE TUB CLEAN

When using the machine under humid conditions for an extended time, various bacteria from the air may stick to the tub and form black dirt (fungi), causing damage to the human body. To keep the tub clean and hygienic at all times, it is recommended reading “**CLEAN TUB COURSE**” above and using only dedicated or recommended detergents to clean the tub regularly at least once every one to three months.

QUICK COURSE

If you want to wash those frequently used towels or less dirty laundry time.

Because washing is speedy, it is good for light or less stained laundry.

1. Press the **Power** button to “On”.
2. Press the **Course** select button four times.
3. Press the **Start/Hold** button.



Water level is selected automatically. Washing, rinsing, and spinning follow. If you want to pause, press the Start/Hold button again. You can change the course when paused.

4. Close the lid.

ECONO COURSE

Econo wash, high water level, cold & hot water temperature is the wash program suitable for a ‘normally soiled cotton load’.

1. Press the **Power** button to “On”.
2. Press the **Course** select button five times.
3. Press the **Start/Hold** button.



Water level is selected automatically. Washing, rinsing, and spinning follow. If you want to pause, press the Start/Hold button again. You can change the course when paused.

4. Close the lid.

setting up your washer

SUPER CLEAN COURSE

Use for cleaner washing.

1. Press the **Power** button to "On".
2. Press the **Course** select button six times.
3. Press the **Start/Hold** button and put the proper amount of detergent into tub.
Water level is selected automatically.
Water level is only selected High~Low.
4. Close the lid.



EASY COURSE

When selecting this course, Air Turbo is selected automatically.

1. Press the **Power** button to "On".
2. Press the **Course** select button seven times.
3. Press the **Start/Hold** button.
Water level is selected automatically. Washing rinsing, and spinning follow. If you want to pause, press the **Start/Hold** button again. You can change the course when paused.
4. Close the lid.



DELAY START

How to reserve washing?

Select this course when you have to go out or do something else.

1. Press the **Power** button to "On".
2. Press the **Course** select button.
3. Press the **Delay Start** button once.
You may change the delay start time with use the Delay Start button. (from 3 hours to 18 hours)
4. Press the **Start/Hold** button and put the proper amount of detergent into tub.
5. Close the lid.
The washing finishes by the time you reserved. Add detergent and softener in proportion to the water level. Then, close the lid.
 - Must add the detergent in the detergent box.
 - If the detergent is spread on the laundry directly, some clothes may get discolored as the start delays.
 - If the Delay Start needs to be canceled, press the Power button.
 - The reserved finish time may be changed depends on the water pressure.



manual functions

Possible to select the function for each course.

(Example) For a simple washing as the little dirt course :

Power → Select the little dirt course → Wash → Start/Hold



SOAK FUNCTION (Including WASH, RINSE, SPIN)

Press the **Power** button.

Press the **Soak** button once.

Press the **Start/Hold** button once.

Water level is selected automatically.

Washing, rinsing, and spinning follow.



WASH ONLY

Press the **Power** button.

Press the **Wash** button.

Press the **Start/Hold** button.

Washing goes on for 15 minutes.

When the **Wash** button is pressed during washing, the wash time can be changed to between 4 and 30 minutes in duration.



RINSE ONLY

Press the **Rinse** button.

Press the **Start/Hold** button.

Rinsing goes on for 2 times.

When the **Rinse** button is pressed during rinsing, the rinse times can be changed to between 2 to 5 times in duration.



SPIN ONLY

Press the **Spin** button.

Press the **Start/Hold** button.

When the **Spin** button is pressed during spinning, the spin time can be changed to from 1 to 9 minutes.



WASH AND RINSE

Press the **Wash** and **Rinse** button.

Press the **Start/Hold** button once.

Detects the amount of laundry, and determines wash and rinse time period automatically.

When the **Wash** and **Rinse** button is pressed during working.

Wash time period is determined between 4 and 30 minutes, and rinse time is determined between 1 and 5 times.



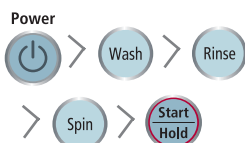
RINSE AND SPIN

Press the **Rinse** and **Spin** button.

Press the **Start/Hold** button once.

Rinsing and spin drying follow.

When the **Rinse** and **Spin** button is pressed during working. The number of rinse times is determined between 2 and 5, and spin time period for drying is determined between 1 and 9 minutes.



WASH, RINSE AND SPIN

Press the **Wash**, **Rinse** and **Spin** button.

Press the **Start/Hold** button once.

Wash, **Rinse** and **Spin** is performed.

installation & maintenance

The User's Manual is for common use.

Make use of the User's Manual depending upon your washing machine model.

ENVIRONMENT

Leave some space

Maintain at least 10cm between the washer and the wall.

Place the washer on a sturdy flat surface.

If the washer is placed on an uneven or weak surface, noise or vibration occurs. (Allowable is 1°)

Adjust the legs for even placement.

Never install the washer near water.

Do not place the washer in steamy rooms or where the washer is directly exposed to rain. Moisture may destroy the electrical insulation causing an electrical shock hazard.

Avoid direct sunlight or heaters.

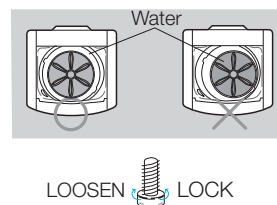
As plastic and electrical components are affected by direct heat, never place the washer near furnaces, boilers, etc. Do not place under direct sunlight.

LEVELLING

- If the washer is not leveled with the ground, it makes the machine tremble more or be out of order. So, make sure that the washer is leveled properly.

SEE IF THE MACHINE IS PLACED LEVEL BY CHECKING THE POSITION OF THE WASHING TUB.

- Open the lid of the machine, pour water into the tub up to the level just below the pulsator, and adjust the legs so that the pulsator is positioned at the center of the water as shown in the figure.
- Place the machine more than 10cm away from the wall.
- Adjust the legs on feet for levelling.



CONNECTING THE WATER SUPPLY HOSE

Check the type of tap fitting which is in your laundry and then see appropriate instruction below:

A tap of ordinary type is desirable



ORDINARY TAP



SQUARE TAP



ROTATING TAP

In case of square tap

- Take out the internal part of the connector and join it in the following way.



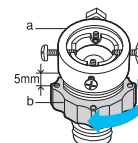
Internal part



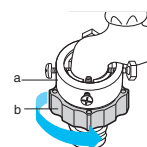
1. Remove the adaptor from the water supply hose.



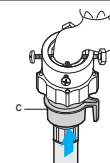
2. First, using a "+" type screw driver, loosen the four screws on the adaptor. Next, take the adaptor and turn part(b) following the arrow for gap about 5 mm between them.



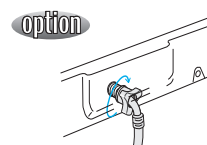
3. Connect adaptor to the water tap by tightening the screws firmly. Then, turn part(b) following the arrow and put (a) and (b) together.



4. Connect the water supply hose to the adaptor. Pull down the part (c) of the water supply hose. When the part (c) is released, the hose is automatically connected to the adaptor making a 'click' sound.



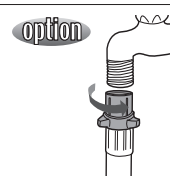
5. Connect the other end of the water supply hose to the inlet water valve at the back of the washer. Screw the hose clockwise all the way in.




- 5-1. Connect the other end of the water supply hose to the inlet water valve at the top of the washer. Screw the hose clockwise all the way in.



- If the water tap is a screw type, assemble a water supply hose that fits to the tap as shown. After completing connection, if water leaks from the hose, then repeat the same steps.

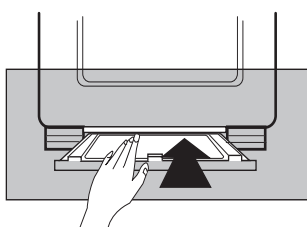
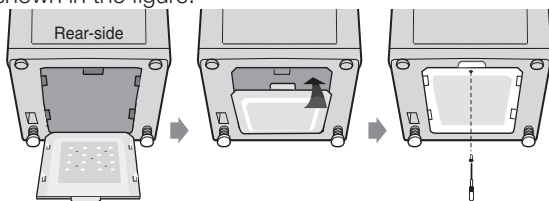


-  After completing connection, if water leaks from the hose, then repeat the same steps. Use the most conventional type of faucet for water supply. In case the faucet is square or too big, remove the spacing ring before inserting the faucet into the adaptor.

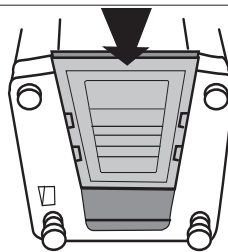
installation & maintenance

ASSEMBLING THE RAT PROTECTION PANEL

Tilt the washer a little and lift up the panel until it clicks, finally fix the panel with screw to the base as shown in the figure.



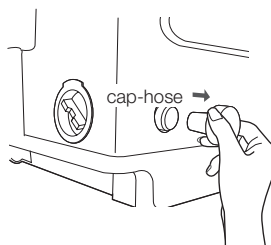
1. Insert the rat protection panel to the assembling hole on back side to the end.



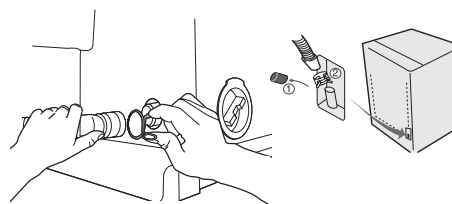
2. If you have difficulty inserting the panel lift up the washer a little and insert it.

HOW TO CONNECT THE DRAIN HOSE

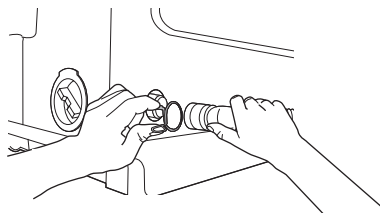
IN CASE OF PUMP-DRAINED WASHER



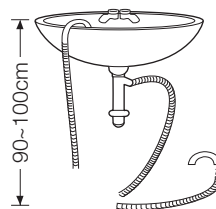
Take out the cap-hose and connect the outlet-hose.



Be sure to join tightly the drain hose into the drainoutlet on the back of the machine.



Be sure to join tightly the drain hose into the drain-outlet on the side of the machine.



Install the drain hose in the position of about 90~100cm above the ground.



HOW TO PUT THE DETERGENT IN

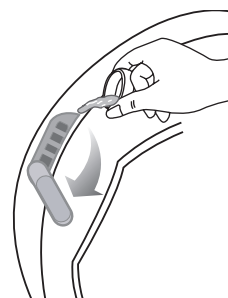
1. Open the detergent box by pulling in the direction of the arrow as shown in the figure and then put the powder detergent in the detergent box.
2. Put in one-time amount of detergent evenly so the detergent may not brim over the box.



HOW TO ADD THE FABRIC SOFTENER

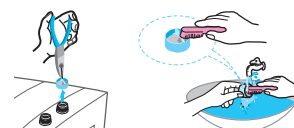
Slide and open the cover in the direction of the arrow, insert the rinse detergent, and slide and close it in the reverse direction.

- When a proper amount (one time does) of fabric softener is stored in the softener inlet, it is automatically put in at the last rinsing cycle.
- Do not use detergent, bleach or starch into the Softener Inlet.
- Using too much softener may produce unsatisfactory results.
- Do not open the lid during the Spin Dry cycle. If added too early, its effectiveness will decrease.
- Do not leave the softener into the Softener Dispenser for a long time. Because softener became stiff.



WATER SUPPLY CONNECTOR FILTER

1. Pull out the filter and wash well.



2. Pull in the filter and connect the hose to the inlet water valve tightly.



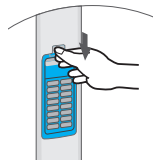
3. Check if there is a leakage.
Note to tighten up the connector.



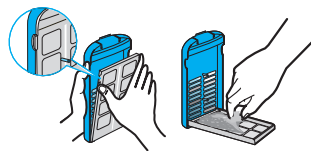
installation & maintenance

CLEANING THE FILTER

Clean the filter net often to keep the washer clean.



1. Push the upper part of the Magic filter and pull in.



2. Open the cover as shown in the figure.



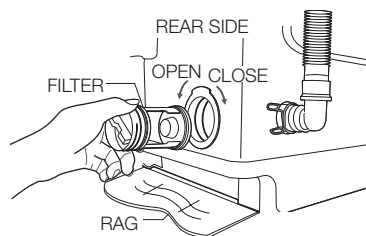
3. Clean the Magic filter.



4. Close the cover and insert the lower part of the filter in the basket first and then push the filter with "click" sound.

HOW TO CLEAN THE PUMP FILTER

1. Place a rag under the washer filter not to wet the floor.
2. Rotate the filter counterclockwise and pull out the filter.
3. Remove dirt and rotate the filter clockwise until it locks in position.



PRECAUTIONS

WARNING! NOTE THE FOLLOWING PRECAUTIONS TO PREVENT ELECTRICITY LEAKAGE AND THE POSSIBILITY OF ELECTRIC SHOCK.

Earthing is necessary to prevent leakage or electric shocks caused by the electric currents leaked from the machine.

How to earth an outlet with earthing terminals when an earthed power load is not fitted.

Outlet with earthing terminals:

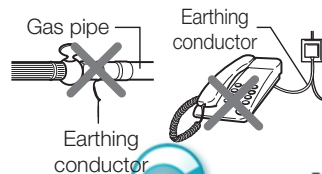
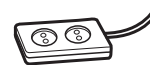
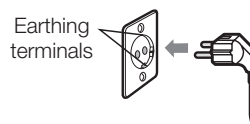
- Even when the internal wires of the earthing terminals are joined, connect the earthing conductor (green) of the machine to the tap.

When using an extension cord and a boosting transformer:


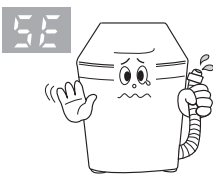
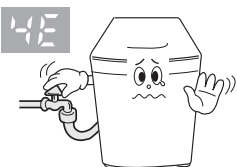
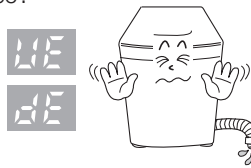

- Make sure that the earthing conductor is connected.

Never make an earthing to

- The telephone line, lightning rod, or gas pipe as it is extremely dangerous in case of lightning strikes.



troubleshooting

PROBLEM	CHECK
Washing machine won't work	<ul style="list-style-type: none"> - Is the water tap opened? - Is the washer plugged in? - Is the power cut off? - Is there enough water? 
Water dose not drain	<ul style="list-style-type: none"> - Is the drain hose down?(No pump) - Is the drain hose frozen? - Is the drain hose clogged? - If the water dose not drain, a buzzer will sound, and the remaining time indicator will show "5E". 
Water is not supplied	<ul style="list-style-type: none"> - Is the water tap opened? - Is the water cut off? - Is the water supply hose or hose connection clogged? - Is the water tap frozen? - If the water supply is not finished in 1 hour or there is no change in the water level 4 minutes after the water supply has started, the buzzer rings and "4E" is displayed on the remaining time indicator. 
Spinning does not work	<ul style="list-style-type: none"> - Is the laundry spread out evenly in the washer? - In the washer set on a sturdy flat surface? 
Water is overflowed	<ul style="list-style-type: none"> - Restart after spinning. - If the error sign still indicates, call agency. 



washing machine won't work?

PROBLEM	CHECK & SOLUTION
The power is cut off.	Is the electric voltage normal?
	Is the washer plugged in? Plug in the electric cord. ➡ Water does not drain.
	Is the drain hose down? Put the drain hose down.
	Is the drain hose folded? Unfold the drain hose.
	Is the drain hose outlet clogged? Remove the waste cleanly.
Washing machine won't work.	Is the washer lid open? ➡ Close the lid.
	Is the Hold button on? ➡ Press the Start/Hold button one more time and check if the washer starts.
	Is enough water filled to the water level? ➡ If the water pressure is low, it takes a long time to start washing.
	Is the faucet closed? ➡ Open the faucet to supply water.
If the drain hose and spin basket are frozen, do as follows.	<ul style="list-style-type: none"> • Add hot water to the frozen water tap and remove the drain hose. Soak into hot water. • Pour hot water into the spin basket for about 10 minutes. • Put a hot water towel on the drain hose connector. • If the drain hose defrosts, connect again and check for proper water draining.
The water drains out immediately.	<ul style="list-style-type: none"> • The drain is clogged with coins or pins. The drain hose is hung over the drain hose hook. Half fill the spin basket with water and try for spinning again.
The water leaks at the water supply hose connector.	If the faucet connecting part is loose, water may leak. ➡ Repeat the assembling steps again. (Refer to "Connecting the water supply hose")
	Check if the rubber packing of water supply hose is in the right position. ➡ Screw tightly again.
	Is the water supply hose folded? ➡ Unfold the hose.
	If the water supply is too strong, water may leak. ➡ Close the faucet a little.
	Is water leaking from the faucet itself? ➡ Fix the faucet. Water is not supplied.



PROBLEM	CHECK
The water leaks at the water supply hose connector.	Did you press the Start/Hold button after selecting the water supply? ➡ If the Start/Hold button is not pressed, water is not supplied. Press the Start/Hold button.
	Is the faucet closed? ➡ Turn on the faucet.
	Is the filter net at the water supply hose connector clogged with dirty matters? ➡ Clean the filter net by brushing with a toothbrush.
	Is the water supply cut off? ➡ If the water supply is suspended, turn off the faucet and power off.
Spinning makes loud noises and vibrations.	Check if the laundry is spread evenly in the washer. ➡ Spread out the laundry evenly and start again.
	Check if the washing machine levels on a sturdy flat floor. ➡ Set the machine at level.
	Is the handle for leveling legs loose? ➡ Adjust the legs on the feet for leveling.
	Is around the washing machine filled with unnecessary stuffs? ➡ Remove those unnecessary things away from the wash machine.

specification

SW50USP

MAX. MASS OF DRY CLOTH IN kg		5.0 kg	STANDARD WATER LEVEL	HIGH	60 l
POWER CONSUMPTION	WASH	330 W		MID	54 l
	SPIN	240 W		LOW	45 l
DIMENSIONS(mm)		W540 X D560 X H856		EXTRA LOW	28 l
WEIGHT		31 kg			
WATER PRESSURE		0.05~0.78 MPa (0.5 ~ 8.0 kg · f/cm ²)	WATER USAGE		160 l



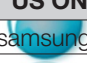
appliancesonline.co

Specification 23 Australia's largest online appliance



QUESTIONS OR COMMENTS?

Country	CALL	OR VISIT US ONLINE AT
AUSTRALIA	1300 362 603	www.samsung.com

 **appliancesonline**
Australia's largest online appliance retailer

Code No. DC68-02447K_EN