



VOLTA



Gemini Gen3 U4510
Instruction Manual

pp
Aus



IMPORTANT SAFETY INSTRUCTIONS

Thank you for choosing a Volta Vacuum Cleaner from the Electrolux Group. To ensure total satisfaction, read the instruction manual carefully. Retain for reference.

IMPORTANT SAFETY INSTRUCTIONS

READ ALL INSTRUCTIONS

BEFORE USING (THIS APPLIANCE)

When using an electrical appliance, basic precaution should always be followed, including the following: Before connecting the cleaner to an electrical supply outlet ensure that the voltage marked on the rating plate (on the underside of the cleaner) is correct for your electrical supply. If it does not comply, do not use the cleaner prior to contacting the manufacturer.

WARNING – To reduce the risk of fire, electric shock, or injury:

1. Do not leave vacuum cleaner when plugged in. Unplug from outlet when not in use and before servicing.
2. To reduce the risk of electric shock, do not use outdoors or on wet surfaces.
3. Young children should be supervised to ensure that they do not play with the appliance. Close attention is necessary when used near children.
4. This appliance is not intended for use by persons (including children) with reduced physical, sensory or mental capabilities, or lack of experience and knowledge, unless they have been given supervision or instruction concerning use of the appliance by a person responsible for their safety. Children should be supervised to ensure that they do not play with the appliance.
5. Use only as described in this manual. Use only manufactures recommended attachments.
6. Do not use with damaged cord or plug. If vacuum cleaner is not working as it should, has been dropped, damaged, left outdoors, or dropped in water, enter it to a service centre before using.
7. Do not pull or carry on cord, use as a handle. Do not close door on cord, or pull around sharp edges or corners. Do not run vacuum cleaner over cord. Keep cord away from heated surfaces.
8. Do not unplug by pulling on the cord. To unplug, grasp the plug, not the cord.
9. Do not handle the plug or vacuum cleaner with wet hands.

10. Do not put any object into openings. Do not use with any opening blocked. Keep free of dust, lint, hair and anything that may reduce airflow.
11. Keep hair, loose clothing, fingers and all parts of body away from openings and moving parts.
12. Turn all controls off before unplugging.
13. Use extra care when cleaning on stairs.
14. Do not use to pick up flammable or combustible liquids, such as gasoline, or use in areas where they may be present.
15. Unplug before connecting the hose.
16. Do not pick up anything that is burning or smoking, such as cigarettes, matches, or hot ashes.
17. Do not use without dust bag and/or filter in place.
18. Do not use extension cords or outlets with inadequate current carrying capacity.
19. We recommend you do not use your vacuum on carpet cleaning foams, sharp or heavy building materials or plaster dust. They could damage or clog dustbag and cause failures to other key parts in your vacuum cleaner and render your warranty invalid.
20. Store your cleaner indoors in a cool, dry area.
21. Keep your work area well lighted.
22. Unplug electrical appliances before vacuuming them.

SERVICE & REPAIR

It is dangerous to alter the specification or modify the product in any way. Under no circumstances should you attempt to repair the cleaner yourself. Repairs are undertaken by unauthorized or inexperienced persons may cause injury and/or serious malfunction and may void warranty.

NB! To avoid injury and prevent damage to the machine, a defective lead must only be replaced by an authorised Volta service provider approved by the manufacturer.

The cleaner should be serviced by an authorized Volta service provider and only genuine Volta spare parts should be used.

Double Insulation

Your vacuum cleaner is double insulated. This means that all external parts are electrically insulated from the mains. This is done by placing insulation barriers between the electrical and mechanical components, making it unnecessary for the cleaner to be earthed.



PARTS IDENTIFICATION

GEMINI U4510



- 1. Telescopic tube
- 2. Bent end handle
- 3. Flexible hose
- 4. On/off switch pedal
- 5. Hose release button
- 6. Power control button /knob

- 7. Cable rewind pedal
- 8. Front over lid latch
- 9. Combination floor nozzle
- 10. Dusting brush, Crevice nozzle, Upholstery nozzle
- 11. Hard floor nozzle



Aus

2.

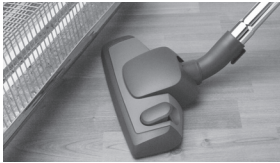


ASSEMBLING THE VACUUM CLEANER

PRECAUTIONARY MEASURES

If the suction air flow is blocked, you should switch off the vacuum cleaner at once. First clear the blockage from the hose and/or telescopic extension tube before you attempt to start the vacuum cleaner again.

1. Do not operate the vacuum cleaner too close to heaters and like radiators, cigarette butts etc.



2. Before you insert the plug into the power socket, make sure your hands are dry.



3. Before you start using the vacuum cleaner, please remove large or sharp objects from the floor in order to prevent the paper bag to be damaged.
4. When you want to pull the plug from the power socket, please do this at the plug itself and not by the means of the electrical cable.



This vacuum cleaner is equipped with a cable and plug, which rolls up on activation of the rewind pedal. If the plug or cable is damaged, the plug and cable assembly must be replaced by returning the product to your local Electrolux Service provider in order to avoid a hazard.

ASSEMBLING VACUUM CLEANER

Always remove the plug from the power socket before fitting or removing accessories!

Fitting the flexible hose

Insert flexible hose into the air intake duct on the top of appliance. Press until it clicks into position.

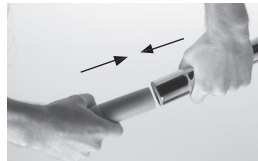


Removing the flexible hose:

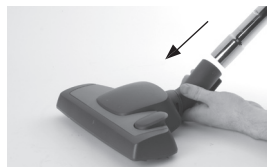
Removing the plug from the power socket. To release the flexible hose firmly, press the two release buttons on the hose sleeve and remove the hose from the air intake duct.

Fitting the telescopic extension tubes and accessories

Fit the telescopic extension tube to the bent end handle.



Fit the floor nozzle to the telescopic extension tube.



Combination Floor Nozzle

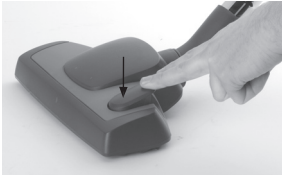
Ideal for the daily cleaning on both carpets and hard floors.



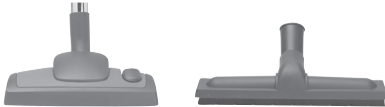


INSTRUCTIONS FOR USE

For carpets, the brush strip should be in a retracted position. Use the shift button on top of the nozzle. Press the shift button to eject the brush strip for soft efficient cleaning of hard floor.



Hard Floors: Use the floor nozzle with the lever in vertical position. For large hard floor areas, use the hard floor nozzle for best results.



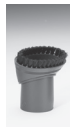
Cleaning tools use

The crevice nozzle, dusting brush, are supplied in the box with the vacuum cleaner.

Crevice nozzle: For radiators, crevices, corners, baseboards and between cushions.



Dusting brush: For furniture, venation, blinds, books, lamp shades and shelves.



Upholstry tool: For furniture, upholstery, curtains and fabric.



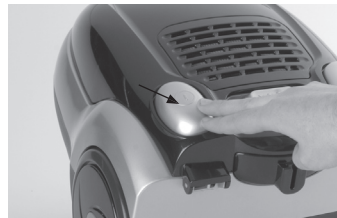
INSTRUCTIONS FOR USE

Before using appliance, unwind a sufficient length of cable and insert the plug into the power socket. A yellow mark on the power cable shows the ideal cable length. Don't extend the cable beyond the red mark.

WARNING:

On collection of proprietary carpet conditioning powders, plaster / concrete dust, it is recommended that the dust bag is changed. Some of the preparations contain substances which while left in the vacuum cleaner for extended periods could create damage. Many air fresheners, household deodorants, sprays and polishes contain highly inflammable gas propellants. Because of this it is particularly important that these products are used strictly in accordance with the relevant manufacturers instructions. It is essential that none of the above products are sprayed directly into the vacuum cleaner or any of the filters, hose assembly or dust chamber

Press the ON/OFF switch pedal to start the appliance.



To rewind the power cable, press the rewind pedal with one hand and guide the cable with the other hand to ensure that it does not whip causing damage.



Adjust the Electronic power control knob to regulate the suction level required on the vacuum cleaner.

MAINTENANCE REMEMBER

1. If your cleaner does not operate check the plug connections and the mains fuse. Checking for the cleaner at fault contact your local authorised service provider, listed in the booklet enclosed with your cleaner.
2. Volta regret that they cannot regard the clearing of a blocked hose being a service provided free of charge, under warranty.



Aus



MAINTENANCE

Changing of the paper or cloth dust bag.

Always operate the cleaner with paper or cloth dust bag installed. If you forget to attach the dust bag or attach it in the wrong manner, the dust cover may not close properly.

1. After removing the hose, open the front cover.
2. Raise the support of the bag to an upright position.



3. Remove the dust bag.
4. In case of paper bag:
Replace the paper bag with new when it is full of dust or dust bag indicator shows red.

In case of cloth bag:
Follow the above 1,2,3 steps
To open, slide the plastic clip off the bag
Empty bag and refit the plastic clip



Note: The cloth bag may be washed in lukewarm water and dried completely. It should not be washed in washing machine.



5. Close the cover by pressing down until it is locked
6. *Note: A cloth bag is not supplied with this product. To purchase a cloth bag, please return to the place of purchase or contact Electrolux on 1300 365 305 (Aus), 0508 730 730 (NZ).

Cleaning the motor filter

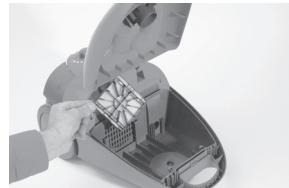
1. Pull dust bag by pulling dust bag collar frame upwards.
2. Pull the filter holder upwards.
3. Remove filter from holder.



4. Rinse filter in lukewarm water and dry the filter completely.



5. Put back filter into the filter holder and refit.



Changing HEPA exhaust filter

1. Open the top hood of the vacuum cleaner.
2. Take the exhaust filter out and fit a new clean filter.
3. Close the top hood.





WARRANTY

for sales in Australia and New Zealand

APPLIANCE: VOLTA BRAND VACUUM CLEANERS

This document sets out the terms and conditions of product warranties for Volta branded appliances. It is an important document. Please keep it with your proof of purchase documents in a safe place for future reference should you require service for your Volta appliance.

General Terms and Conditions

In this warranty Electrolux means Electrolux Pty Ltd ABN 21 000 015 136 in respect of Appliances purchased in Australia and Electrolux (NZ) Limited in respect of Appliances purchased in New Zealand; 'Appliance' means any Volta branded product purchased by you accompanied by this document; 'Warranty Period' means where you use the Appliance for personal, domestic or household purposes in Australia and in New Zealand, the period of 24 months; where you use the Appliance for commercial purposes, the period of 3 months following the date of original purchase of the Appliance; 'you' means the purchaser of the Appliance not having purchased the appliance for re-sale, and 'your' has a corresponding meaning.

1. This warranty only applies to Volta branded appliances purchased and used in Australia or New Zealand and in addition to (and does not exclude, restrict, or modify in any way) any non-excludable statutory warranties in Australia or New Zealand.
2. Electrolux warrants that, when dispatched from an Electrolux warehouse, the Volta branded appliance is free from defects in materials and workmanship for the Warranty Period.
3. During the warranty period Electrolux or its Authorised Service Centre will, at no extra charge and subject to these terms and conditions, repair or replace any parts which it considers to be defective. You agree that any replaced Appliances or parts become the property of Electrolux. This warranty does not apply to bonus giveaways or batteries, drive belts, filters, accessories or similar consumable parts.
4. You are responsible for paying all service call fees and/or transport charges and/or damages and loss incurred in connection with transportation of this appliance to and from Electrolux or its duly appointed service provider's premises.
5. Parts and appliances not supplied by Electrolux are not covered by this warranty
6. Proof of purchase is required before you can make a claim under this warranty. You may not make a claim under this warranty unless the defect claimed is due to faulty or defective parts or workmanship. Electrolux is not liable in the following situations (which are not exhaustive):
 - A) The Appliance is damaged by:
 - (i) use with anything other than Volta genuine spare parts
 - (ii) accident
 - (iii) vacuuming up wet materials or construction/building materials that is not normal day to day domestic dry use
 - (iv) misuse, neglect or abuse, including failure to properly maintain or service
 - (v) normal wear and tear
 - (vi) power surges, electrical storm damage or incorrect power supply.

- (vii) incomplete or improper installation
- (viii) incorrect, improper or inappropriate operation
- (ix) insect or vermin infestation.
- B) The Appliance is modified without authority from Electrolux in writing.
- C) The Appliance's serial number or warranty seal has been removed or defaced.
- D) The Appliance was serviced or repaired by anyone other than Electrolux or its Authorised Service Centres.

This warranty, the contract to which it relates and the relationship between you and Electrolux are governed by the law applicable in the State where the Appliance is purchased if the Appliance is purchased in Australia or the law applicable in New Zealand if the Appliance is purchased there. Where the Appliance is purchased in New Zealand for business purposes the Consumer Guarantee Act does not apply.

Limitation of Liability

To the extent permitted by law:

- A) Electrolux excludes all warranties other than as contained in this document;
- B) Electrolux shall not be liable for any loss or damage whether direct or indirect or consequential arising from your purchase, use or non-use of the Appliance.

Provisions of the Trade Practices Act and State consumer legislation in Australia, and the Consumer Guarantees Act, the Sale of Goods Act and the Fair Trading Act in New Zealand, imply warranties or conditions, or impose obligations, upon Electrolux which cannot be excluded, restricted or modified. To the extent permitted by law, the liability of Electrolux (if any) arising out of or in relation to the Appliance or any services supplied by Electrolux shall be limited (where it is fair and reasonable to do so); in the case of Appliances, at its option, to the replacement or repair of the Appliances or the supply of equivalent products or the payment of the cost of replacing the Appliances or having the Appliances repaired or of acquiring equivalent Appliances. Upon being replaced, parts and Appliances become the property of Electrolux; or in the case of services, at its option, to the supply of the services again or the payment of the cost of having the services re-supplied; and in the case of Appliances or services supplied in New Zealand, loss or damage whether direct or indirect or consequential that is reasonably foreseeable.

Privacy

You acknowledge that in the event that you make a warranty claim it will be necessary for Electrolux and its Authorised Service Centres to exchange information in relation to you to enable Electrolux to meet its obligations under this warranty.

Important Notice: Before Calling a Service Technician please check carefully the operating instructions, service booklet and the warranty terms and conditions.

FOR SERVICE OR TO FIND THE ADDRESS OF YOUR NEAREST STATE SERVICE CENTRE IN AUSTRALIA
Please call **1300.366.366**.

FOR SPARE PARTS OR TO FIND THE ADDRESS OF YOUR NEAREST STATE SPARE PARTS CENTRE IN NEW ZEALAND Please call **0508 730 730**





KEEP THIS FOR YOUR RECORDS

TO completed by the Purchaser

Model

Serial No.....

Date of Purchase.....

Retailers Name.....

Retailers Address.....

.....

City..... State.....

Attach Your Purchase Receipt Here

Electrolux Floor Care and Small Appliances
Electrolux Pty Ltd ACN 000 015 136
13 Gilbert Park Drive, Knoxfield Victoria,
Australia, 3180. Ph: (03) 8756 7300
www.electrolux.com.au

Electrolux Floor Care and Small Appliances
A division of Electrolux (NZ) Limited
130 Cryers Road, East Tamaki, Auckland
New Zealand. Ph: (09) 273 8340
www.electrolux.co.nz

*Some models may be limited in availability or be available from certain stores only. Not all models and specifications are available at time of printing and not all models are available in NZ. See your local Volta retailer or call the above phone numbers for further information if required.

*Due to the Electrolux policy of continual product development; specifications, colours and details of our products and those mentioned in this manual are subject to change without notice.

 **From the Electrolux Group.**

33380726

