



NOISE, EXCESSIVE VIBRATIONS AND WATER LEAKAGES CAN BE CAUSED BY INCORRECT INSTALLATION. NEVER MOVE THE APPLIANCE BY CARRYING IT AT THE WORKTOP.

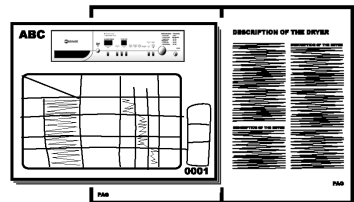
- Read this “INSTALLATION GUIDE” before operating.
- Keep this “INSTALLATION GUIDE” for future reference.
- Read the general recommendations about disposing of packaging in the Instructions for Use.

PARTS SUPPLIED

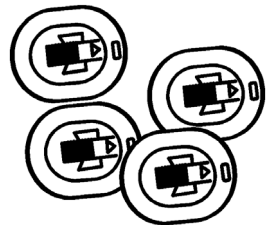
Bag with small items



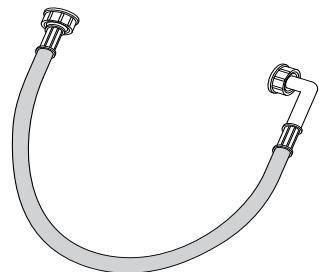
Instructions for Use



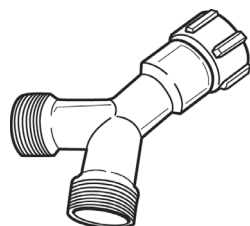
4 plastic caps



Inlet hose (inside the machine or already installed)

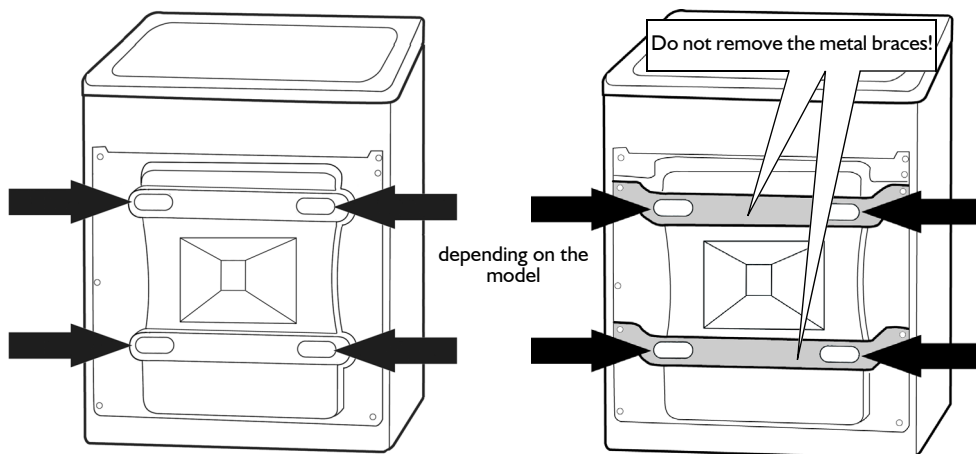


Y-adapter (only supplied for certain models)

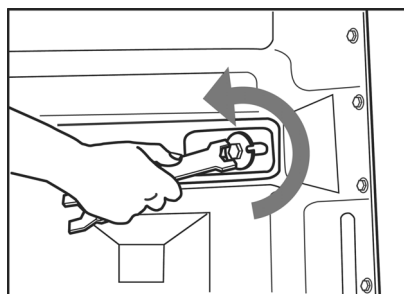


IMPORTANT: FIRST REMOVE TRANSPORT BOLTS!

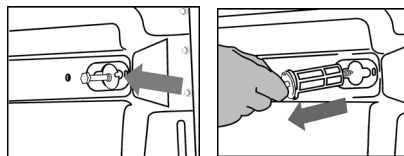
- Not removed transport bolts cause damages to the washing machine!
Keep the transport bolts for further transporting of the washing machine; in this case refit them in reverse order (take care that you refix the whole transport bolt, with the plastic part, and not only the screw).



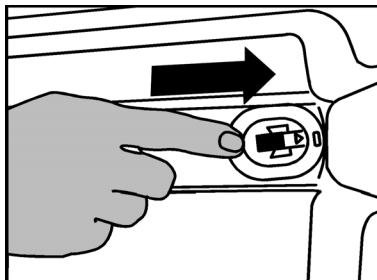
1. - Unscrew the 4 screws of the transport bolts with a 12 mm wrench; the screws are quite long and you have to screw a while until you can release them.



2. - Move the screws to the centre of the holes and remove them by pulling them out.



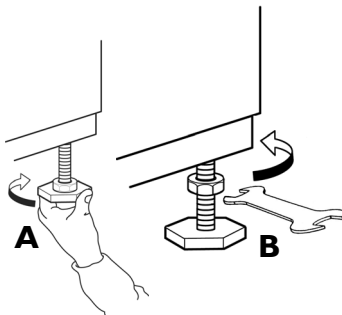
3. - To close the holes, insert the supplied plastic caps in the wide part of the holes and push them towards the edge of the appliance, until they click into place.



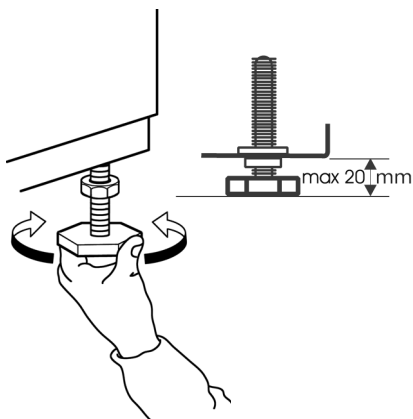
ADJUSTMENT OF THE FEET

- The appliance must be installed on a solid and level floor surface (if necessary use a spirit level). If the floor is wooden or floating, distribute the weight by placing it on a sheet of plywood measuring at least 60 x 60 cm and thickness of at least 3 cm which is screwed to the floor. If the floor is uneven, adjust the 4 levelling feet as required; do not insert pieces of wood etc. under the feet.
- During the process of adjusting the feet, a second person must help you and firmly hold the washing machine in a tilted position.

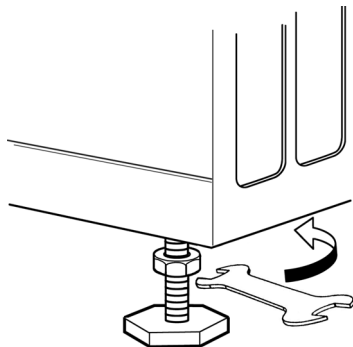
4. - Screw out the washing machine's feet by hand (**A**) with 2-3 clockwise turns and then slacken the locknut counterclockwise by means of a 13 mm wrench (**B**).



5. - Adjust the height of each foot by revolving it. Observe that the distance between the bottom of the washing machine's cabinet and the floor must not exceed 20 mm.

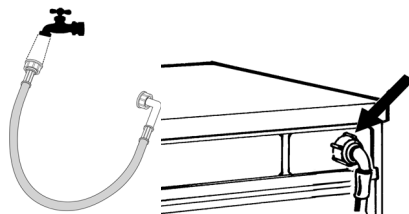


6. - Important: tighten the locknut by turning it counterclockwise against the appliance cabinet.



CONNECT THE WATER INLET HOSE

7. - If the water inlet hose is not already installed, it must be screwed to the appliance. If your washing machine has one inlet valve on the back: connect it to cold fill only.

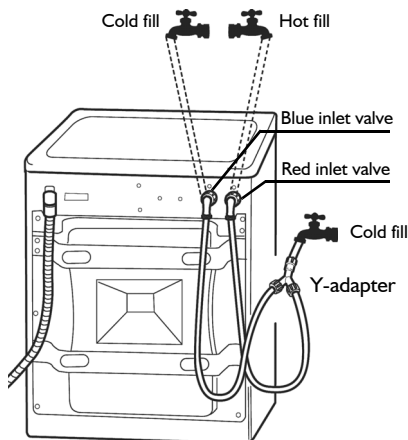


8. - If your washing machine has two inlet valves on the back, **you must connect both valves to the water supply:**

- either connect red inlet valve to hot fill tap and blue inlet valve to cold fill tap.
- or connect both inlet valves to cold water tap by using a Y-adaptor.

Make sure all connections are tightly fixed.

Screw the inlet hose **by hand** to the tap and to the inlet valve and tighten the nut. **Do not use any tools for fixing the inlet hose.**

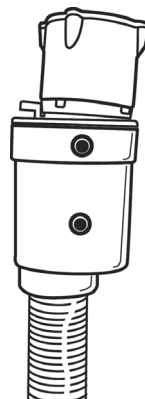


Attention

- No kinks in the hose!
- The appliance **must not** be connected to the mixing tap of an un-pressurized water heater.
- Check water-tightness of connections by turning the tap completely on.
- If the hose is too short, replace it with a suitable length of pressure resistant hose (1000 kPa min, EN 50084 approved type).
- Check the inlet hose regularly for brittleness and cracks and replace if necessary.
- The washing machine can be connected without a non-return valve.

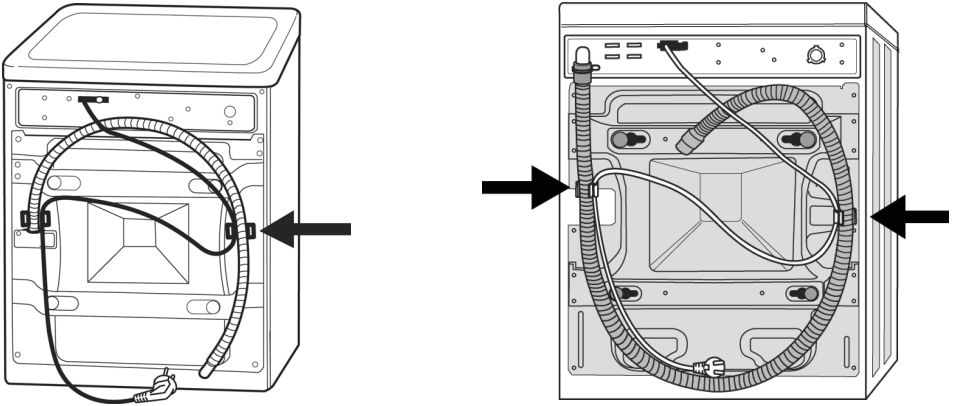
- For models with Water Stop hose:

If the flexible hose is too short, replace it with a longer Water Stop hose available through our After-Sales Service or from your dealer.

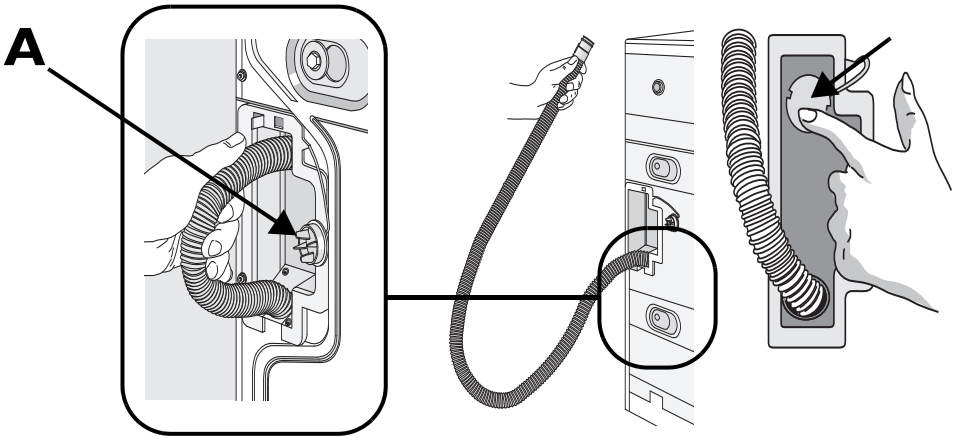


CONNECT THE DRAIN HOSE

9. - Unclip the drain hose from the holders marked by the arrows (depending on the model).



- If the drain hose is installed inside your washing machine, pull the hose completely out of the holder and close the opening with cap "A" attached.



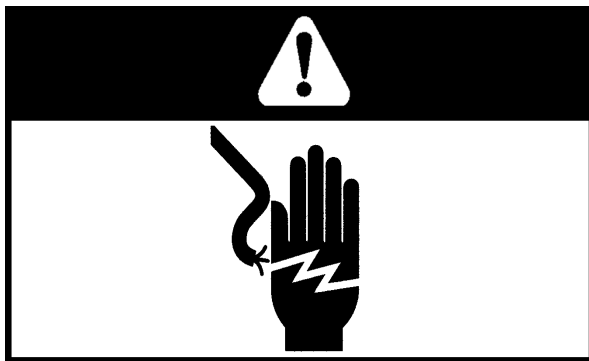
- 10.- Firmly connect the drain hose to the siphon or another outlet for drain water. If you want to hang the end of the drain hose over the edge of a sink or bath tub, you can get a "U-bend" (which is fixed at the very end of the drain hose) over our After-Sales Service.



Important

- Make sure there are no kinks in the drain hose.
- Secure the hose so that it cannot come off the water outlet during draining.
- Make sure that the drain water cannot flow out or overflow during draining (small hand basins are not appropriate).
- Height for fixation of drain hose end: minimum 60 cm, maximum 125 cm.
- To make an extension, use a hose of the same type and secure the connections with clips.
- Max. Overall drain hose length: 2,50 m (in this case, the maximum height for fixation of hose end is 90 cm).

ELECTRICAL CONNECTION



- *Use a socket with an earth connection.*
- *Do not use extension leads or multi sockets.*
- *The electrical power cable must be replaced exclusively by a licensed electrician.*
- *Electrical connections in your home must correspond to the valid local regulations.*