

**MADE FOR  
MODERN FAMILIES**





## MADE FOR MODERN FAMILIES

Westinghouse has been a household name for generations. And while we've been helping New Zealand families for years, times have changed. And we've changed with them...

Life is so much busier than it used to be, filled with work, extra curricular activities, not to mention just raising a family! We know it's not always easy, which is why all Westinghouse products are designed to make your life a little simpler.

Although we can't solve everything (sorry!), we can help keep your kitchen in control and looking great. So whether it's the auto reheat microwaves, for busy mid-week meal dilemmas, or dishwashers that get the perfect wash, no matter how you stack; you can always be sure it's been Made for Modern Families.

Models shown: single pyrolytic oven POR883S, integrated rangehood EFG750X/A.







Built-in Ovens 8 – 11



Accessories 33



Cooking Range 12 – 19



Microwaves 20 – 21



 Westinghouse



Dishwashers 30 – 32



Rangehoods 28 – 29



Cooktops 22 – 27



# BOSS®. THE BIG OVEN SYSTEM

Introducing the bigger, more efficient oven system – the Westinghouse BOSS® oven. With larger usable capacity and a European 'A' Class energy efficiency rating<sup>1</sup>, the BOSS® oven platform is perfect for families and entertaining.

BOSS® FEATURE	MEANING...	BENEFIT TO YOU
Gross oven capacity is 80L	Larger oven capacity*	More room for cooking large meals for your family or when entertaining
A-Class Energy Efficiency based on European standard EN50304	Energy efficient	More efficient cooking – saving you time and money
Optimised oven cavity design	Excellent cooking performance through better, more even air circulation for optimal heat distribution	There are no hot or cold spots in the oven so food is cooked evenly on each shelf
Reduced air and noise emissions	Less hot air is expelled by the cooling fan Fans and air ducts are optimised for low noise, whether the oven door is open or closed	Your kitchen is a more pleasant place for you and your family because the oven expels less heat and is very quiet when operating
Improved cleaning	Pyrolytic function Catalytic liners Easy, twist & release grill elements Rounded oven cavity Flat glass-back doors Fingerprint-resistant stainless steel	Easily clean the entire oven. Turns grime and grease into ash. Simply wipe clean when cool. No need for chemicals Specially coated liners on the sides and rear of the oven absorb and vapourise cooking residues Easily swing the grill element out of the way to clean the roof of the oven No corners to trap grime makes wiping down oven walls easy No seals or ridges to trap grime and grease to make cleaning quick and simple Keep your oven looking like new
Improved safety	Integrated grill shield in oven roof	Protects hands from the hot elements when reaching for grill
Fast heat-up time	Heats to +200°C in under 10 minutes (multi-function 8 and multi-function 10 models only)	Less time waiting for the oven to heat up means you spend less time cooking and more time with your family and guests

<sup>1</sup>to European standard EN50304.

\*Most 600 x 600mm ovens have less usable interior space.

## A GUIDE TO BUYING YOUR NEXT OVEN

Westinghouse is here to help you choose the right oven for your needs. Below are some handy hints to help you make the right decision.

<b>SIZE</b>	Oven capacities are quoted in gross and usable (or nett) volume. Gross is always bigger than usable, but it is the usable volume that defines how much workable space you've got. If in doubt, take your largest baking trays into the store and make sure they fit.
<b>VALUE</b>	Consider which features are really useful to you. How often will you use meat probes or rotisseries?
<b>EASY CLEANING</b>	Easy internal access and smooth surfaces make ovens easier to clean. Look for drop down grill elements, full-width glass-back doors and rounded corners. Top of the range cleaning options include pyrolytic function, or catalytic liners.
<b>SAFETY</b>	Key safety aspects to look for include touch temperature of doors, secure non-tilting shelves, and potential for exposure to hot grill elements. Multi-layer glass doors have lower touch temperatures and grill guards protect against burns.
<b>OVEN FUNCTIONS</b>	Check the details of what actual cooking functions are included in the number of multiple oven functions featured. For example, some count an oven light in the number of their multi-functions, which is clearly not a cooking function.
<b>EFFICIENCY</b>	Heat up time, heat retention, heat loss, insulation and cooking performance are factors that indicate oven efficiency. Look for a "European A-Class" rated oven that heats up to 200°C in ten minutes and provides superior cooking results.
<b>ERGONOMICS</b>	With underbench ovens, you need to bend down to reach the contents, but they provide more benchtop space than a wall oven. On the other hand, a wall oven makes it easier to lift meals in and out. Similarly, side opening oven doors make it easier to access the oven.

## 60CM BUILT-IN OVENS

Cooking for the entire family can be stressful at the best of times. That is why Westinghouse has developed an even wider range of superior cooking solutions designed to ensure meal time runs as smoothly as possible. The range includes 60cm ovens with a spacious 80 litre gross capacity. All of which ensure when it comes to cooking for the entire family, it's easy, from start to finish.



### LARGE CAPACITY OVENS

Boasting European A-class energy efficiency\*, the largest of our built-in oven range will deliver a huge 160L of total gross capacity in the double oven, followed by a surprising 126L in the duo range and a generous 80L in the standard models.

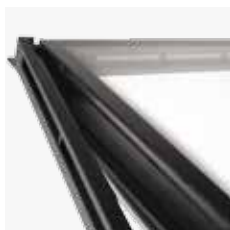
\*to European standard EN50304.



### TOUCH ON GLASS CONTROLS

Completely flat touch controls, wipe clean quickly and easily. No buttons, no fuss.

(Selected models only)



### MULTI-LAYER GLAZED OVEN DOOR

Cooler and safer exterior oven door temperatures are an obvious outcome of multi-layer glazed doors. The full-width inner glass door means a better oven seal and better temperature control, as well as easier cleaning.

(Selected models only – refer to features tables)



### SIDE OPENING DOORS

Side opening doors allow you to get closer to the oven and minimise reaching.

(Selected models only)



### CATALYTIC LINERS

Handy self-cleaning catalytic liners are fitted on selected models to absorb the fat given off during the cooking process. The fats are then vapourised by the heat of the oven, making cleaning a breeze. These can also be purchased as an optional extra.

(Refer to features tables)



### ANTI-SPATTER GRILL INSERTS

The safe and convenient way to grill – the anti-spatter grill insert enables cooking fats to drain into the grill dish below, which reduces the risk of fires and allows for healthier cooking.



### EASY CLEANING

Easy to maintain fingerprint-resistant stainless steel, removable knobs, rounded oven cavity corners, drop down grill<sup>†</sup>, acid-resistant enamel and flat-back glass doors all add up to easier cleaning.

(<sup>†</sup>Multi-function grill-in-oven models)



### QUIET AND COOL

The Westinghouse BOSS® range of ovens have been designed to be ultra quiet and emit less external heat for a more comfortable kitchen environment.



### PYROLYTIC CLEANING

Up to two pyrolytic functions turn different levels of grease and grime into ash, which can then be simply wiped away. There is no need for harsh chemicals.

(POR881W/S and POR883W/S only)



## DOUBLE CAVITY ELECTRIC OVENS

features†



MODEL	PDR790W/S	PDR794S
type	duo oven	double oven
available finishes	white/ fingerprint-resistant stainless steel	white/ fingerprint-resistant stainless steel
BOSS® oven system	✓	✓
<b>MAIN OVEN</b>		
oven functions	multi-function 8	multi-function 8
capacity		
– gross (litres)	80	80
– usable (litres)	66	66
catalytic liners	rear & sides	rear & sides
timer	programmable	programmable
lights	3	3
glass layers in door	3	3
<b>SECOND OVEN OR SEPARATE GRILL</b>		
oven function	multi-function 5	multi-function 8
capacity		
– gross (litres)	46	80
– usable (litres)	35	66
catalytic liners	rear & sides	rear & sides
lights	1	3
glass layers in door	3	3
<b>GENERAL FEATURES</b>		
controls	knob	knob
number of shelves	3	4
oven/grill dish	✓	2
grill dish		
anti-spatter grill insert	✓	✓
oven tray	1 x enamel full-width baking tray	2 x enamel full-width baking tray
connection	hardwire	hardwire
maximum power rating	5.3kW	6.2kW
<b>DIMENSIONS ^</b>		
overall HxVxWxD (mm)	888 x 595 x 566	1081 x 595 x 566
flush mount cut-out HxVxWxD (mm)	893 x 600 x 581	1086 x 600 x 581
proud mount cut-out HxVxWxD (mm)	885 x 565 x 560	1078 x 565 x 560

^ IMPORTANT! The above dimensions are a guide only. For complete dimensions and installation requirements, you must refer to the information provided with the product or visit [www.westinghouse.co.nz](http://www.westinghouse.co.nz)

† Refer to the product information on the back page of this brochure.

## SINGLE CAVITY ELECTRIC OVENS features†



MODEL	POR881S / W	POR883S / W	POR783S
type	single pyrolytic oven	single pyrolytic oven	single oven
available finishes	white/fingerprint-resistant stainless steel	white/fingerprint-resistant stainless steel	fingerprint-resistant stainless steel
BOSS® oven system	✓	✓	✓
<b>MAIN OVEN</b>			
oven functions	multi-function 8	multi-function 10	multi-function 10
capacity			
– gross (litres)	80	80	80
– usable (litres)	66	66	66
oven cleaning	2 function pyrolytic	2 function pyrolytic	catalytic liners
catalytic liners			rear & sides
timer	programmable	programmable	programmable
lights	1	1	3
glass layers in door	4	4	3
side opening door*			
<b>GENERAL FEATURES</b>			
controls	knobs	touch on glass electronic	touch on glass electronic
number of shelves	2	2	2
oven/grill dish	✓	✓	✓
anti-spatter grill insert	✓	✓	✓
oven tray	enamel full-width baking tray	enamel full-width baking tray	enamel full-width baking tray
connection	hardwire	hardwire	hardwire
maximum power rating	3.1kW	3.1kW	3.1kW
telescopic runners			
<b>DIMENSIONS ^</b>			
overall HxVxD (mm)	595 x 595 x 573	595 x 595 x 573	595 x 595 x 566
flush mount cut-out HxVxD (mm)	600 x 600 x 581	600 x 600 x 581	600 x 600 x 581
proud mount cut-out HxVxD (mm)	590 x 565 x 560	590 x 565 x 560	590 x 565 x 560

^ IMPORTANT! The above dimensions are a guide only. For complete dimensions and installation requirements, you must refer to the information provided with the product or visit [www.westinghouse.co.nz](http://www.westinghouse.co.nz)

\* Model as supplied is configured for left hand hinge. The door can be changed to right hand hinge at installation.

† Refer to the product information on the back page of this brochure.



POR668W/S	POR667W/S	POR663W/S	PORS668S
single oven	single oven	single oven	single oven
fingerprint-resistant stainless steel	white/ fingerprint-resistant stainless steel	white/ fingerprint-resistant stainless steel	white/ fingerprint-resistant stainless steel
✓			✓
multi-function 10	multi-function 5	multi-function 3	multi-function 8
80	80	80	80
66	66	66	66
catalytic liners			–
rear & sides	accessory	accessory	
programmable	programmable	90 minute auto-off (POR663W) 120 minute auto-off (POR663S)	programmable
3	1	1	1
3	2	2	3
			✓
touch on glass electronic	knob	knob	knob
2	2	2	2
✓	✓	✓	✓
✓	✓	✓	✓
enamel full-width baking tray	full-width baking tray	full-width baking tray	enamel full-width baking tray
hardwire	hardwire	hardwire	hardwire
3.1kW	3.0kW	2.3kW	3.0kW
595 x 595 x 566	595 x 595 x 566	595 x 595 x 566	595 x 595 x 566
600 x 600 x 581	600 x 600 x 581	600 x 600 x 581	600 x 600 x 581
590 x 565 x 560	590 x 565 x 560	590 x 565 x 560	590 x 565 x 560

<sup>†</sup> Refer to the product information on the back page of this brochure.

# 90CM COOKING RANGE

Preparing large family feasts and entertaining friends has just become a whole lot easier thanks to the new 90cm cooking range from Westinghouse.

With its huge 125L gross capacity and super-quick heat up time, you'll enjoy perfect results no matter what you cook. Beautifully designed and made in Australia, this large, easy-clean range of ovens is set to become the new family favourite.



### LARGE OVEN CAPACITY

With a spacious 125L gross capacity\*, you can cook large meals with minimum fuss and maximum results. Our ovens have been tested to evenly bake up to 72 mini cupcakes in one go, so they're perfect for those last-minute school fundraisers!



### EASY-CLEAN OVEN

Enjoy easy cleaning with one seamless fully sealed oven cavity. With no awkward joints, nooks or crannies to trap grease, a simple wipe is all you need to keep your oven clean.



### TWIN FAN SYSTEM FOR EVEN COOKING

Cook each dish to perfection with the Twin Fan System. Fans rotate in opposite directions, distributing heat evenly throughout the oven, so you enjoy great results every time.



### HANDY STORAGE COMPARTMENT

Extra storage always comes in handy, so with a clever storage compartment offered in our freestanding models, you can easily stow away any extra pots and pans.

(Excludes model WFE912SA and WVE916SA)



### FAST HEAT-UP TIME

Every moment counts at meal times, so while your oven heats up fast you can save time and get on with cooking the dishes you and your family love.



### FINGERPRINT-RESISTANT STAINLESS STEEL

Little hands or sticky fingers won't be a problem with easy-clean fingerprint-resistant stainless steel.



### COOL TOUCH DOOR

For added safety and confidence in the kitchen, our cool touch door is beautifully designed with a large window, so you can keep a close eye on your cooking.



### EASY TO USE HOB

Designed for maximum ease of use, our gas hobs have either a 5 or 6 burner configuration including a triple ring wok. The flat design trivets make it easy to slide pots from one burner to another. The full glass ceramic hob with touch controls is easy to use and clean.

(Excludes WVE916SA model)



### FULL-TOUCH ELECTRONIC CONTROL PANEL

Simple to operate and beautifully designed, the full touch electronic control panel is easy to clean and also features a fully programmable timer.

(Selected models WVE916SA, WFE916SA and WFE946SA)

\* Based on International Standard IEC 60350-1.



## 90CM COOKING RANGE

features†



MODEL	WFE916SA	WFE914SA
type	dual fuel freestanding	dual fuel freestanding
fingerprint-resistant stainless steel finish	✓	✓
<b>HOB*</b>		
type	gas	gas
burners/elements	6	5
front left	14.4 MJ/h (wok)	5.1 MJ/h
front right	12.1 MJ/h	12.1 MJ/h
front middle	5.1 MJ/h	
rear middle	9 MJ/h	
middle		14.4 MJ/h (wok)
rear left	9 MJ/h	9 MJ/h
rear right	9 MJ/h	9 MJ/h
control type	knobs	knobs
trivets	cast iron	cast iron
ignition	electronic ignition	electronic ignition
flame failure	✓	✓
wok support	✓	✓
<b>MAIN OVEN</b>		
type	electric	electric
oven functions	multi-function 10	multi-function 8
twin fan system	✓	✓
capacity*		
– gross (litres)	125	125
– usable (litres)	116	116
timer	fully programmable touch control	3 button touch control
lights	2 x 25W halogen	2 x 25W halogen
glass layers in door	3	3
catalytic liners	✓ (sides and rear)	
grill in oven	✓	✓
removable side racks	✓	✓
shelf positions	7	7
<b>GENERAL FEATURES</b>		
removable stainless steel splashback	✓	✓
wire shelves	2	2
grill dish	2 x half-width	2 x half-width
grill insert	2 x half-width	2 x half-width
grill rack	1 x full-width	1 x full-width
storage compartment	✓	✓
removable stainless steel kickplate	✓	✓
removable feet	stainless steel metal	stainless steel metal
<b>CONNECTION</b>		
type	hardwire	hardwire
maximum power rating (kW)	3.1	3
maximum gas rating (NG)†	58.6 MJ/h	49.6 MJ/h
<b>DIMENSIONS^</b>		
overall HxVxD (mm)	910–930^ x 895 x 600	910–930^ x 895 x 600
removable splashback height (mm)	60	60
freestanding cut-out (with feet attached) HxVxD (mm)	900 nominal x 900 min x 600	900 nominal x 900 min x 600
freestanding cut-out (on plinth, feet removed) HxVxD (mm)	755 max x 900 min x 600	755 max x 900 min x 600
flush mount cut-out HxVxD (mm)		
proud mount cut-out HxVxD (mm)		



WFE912SA	WFE946SA	WVE916SA
dual fuel freestanding	electric freestanding	electric underbench
✓	✓	✓
gas	ceramic	
5	5	
5.1 MJ/h	1200W	
12.1 MJ/h	1800W	
14.4 MJ/h (wok)	1400/2200W (dual zone)	
9 MJ/h	800/1600/2300W (triple zone)	
9 MJ/h	1200W	
knobs	touch	
cast iron		
electronic ignition		
✓		
electric	electric	electric
multi-function 8	multi-function 10	multi-function 10
✓	✓	✓
125	125	125
116	116	116
3 button push control	fully programmable touch control	fully programmable touch control
2 x 25W halogen	2 x 25W halogen	2 x 25W halogen
3	3	3
✓	✓ (sides and rear)	✓ (sides and rear)
✓	✓	✓
7	7	7
✓	✓	
2	2	2
2 x half-width	2 x half-width	2 x half-width
2 x half-width	2 x half-width	2 x half-width
1 x full-width	1 x full-width	1 x full-width
	✓	
	✓	
black	stainless steel metal	
hardwire	hardwire	hardwire
3	12.3	3.1
49.6 MJ/h		
910–930 <sup>^</sup> x 895 x 600	906–926 <sup>^</sup> x 895 x 600	596 x 895 x 572
60	60	na
900 nominal x 900 min x 600	900 nominal x 900 min x 600	na
755 max x 900 min x 600	755 max x 900 min x 600	na
		600 x 900 x 580
		590 x 864 x 560

\* IMPORTANT The above dimensions are a guide only. Depth excludes knobs and handles. For complete dimensions and installation requirements, refer to the information provided with the product or visit [www.westinghouse.com.au](http://www.westinghouse.com.au)  
 ~ Burner outputs shown above are for natural gas connection.

<sup>^</sup> Height is adjustable and refers to height to hob.  
 This does not include the height of the trivets above the hob.  
 \* Based on International Standard IEC 60350-1.  
 † Refer to the product information on the back page of this brochure.

## ELECTRIC OVENS

	POR881	POR883	POR663	POR667	POR668	POR783	POR790	POR794	OSP635	PSP632	WFE916	WFE914	WFE916	WFE946	WFE912	
<b>main oven</b>																
 <b>pyrolytic cleaning</b> Heats to high temperature and burns off splatters, accumulated dirt and grease from the oven liner. Simply wipe out ash when cooled.	✓															
 <b>conventional bake (bake/pizza)</b> Heats from the top and bottom elements. Thermostat controlled, to maintain a constant temperature. Ideal for single trays eg. biscuits, scones, cakes, casseroles, roasts.	✓	✓		✓	✓	✓	✓	✓			✓	✓	✓	✓	✓	✓
 <b>fan bake</b> Heats from elements surrounding the fan, circulating heat around the oven. Cooks at a lower temperature – faster than baking. Ideal for multi-shelf cooking and reheating.	✓	✓	✓	✓	✓	✓	✓	✓	✓	✓	✓	✓	✓	✓	✓	✓
 <b>grill – electric</b> Uses a powerful upper element to grill the top of food such as tender meats, fish, cheese toasties and other quick cooking food. Preheat the grill for 3 minutes for best results.	✓	✓	✓	✓	✓	✓	✓	✓			✓	✓	✓	✓	✓	✓
 <b>maxi grill – electric</b> Grill element and top element works like a normal grill but uses both the grill element and the boost element, so that more can be grilled.	✓	✓		✓	✓	✓	✓	✓			✓	✓	✓	✓	✓	✓
 <b>defrost</b> Uses the fan only to circulate the air in oven to accelerate defrosting of food.	✓	✓		✓	✓	✓	✓	✓	✓	✓	✓	✓	✓	✓	✓	✓
 <b>rapid heat/ fast heat</b> Uses a combination of elements to get the oven to the required temperature faster. Can also be used for drying herbs, craft items, etc.	✓	✓		✓	✓	✓	✓	✓			✓	✓	✓	✓	✓	✓
 <b>base heat</b> Uses the bottom element only. Excellent for where a crisp base is required.		✓		✓	✓	✓	✓	✓			✓	✓	✓	✓	✓	✓
 <b>fan assist</b> Both top and bottom elements (PON783S) or bottom element (DSK965/963) are used while a fan circulates air within the cavity.	✓	✓			✓	✓					✓		✓	✓		
 <b>pizza</b> This function uses the bottom element and the element around the fan.		✓			✓	✓					✓		✓	✓		
 <b>fan grill</b> The grill element and the fan are used in combination. Excellent for thicker cuts of meat, or to get a rotisserie style result.	✓	✓	✓	✓	✓	✓	✓	✓			✓	✓	✓	✓	✓	✓
 <b>fast heat up</b> Preheat oven 30% quicker than on standard "Bake/Pizza".											✓		✓	✓		
<b>second oven/separate grill</b>																
<b>conventional bake</b>							✓									
<b>fan forced bake</b>							✓									
<b>grill</b>						✓	✓		✓	✓						
<b>maxi grill</b>							✓									
<b>defrost</b>						✓	✓									
<b>rapid heat/ fast heat</b>							✓									
<b>base heat</b>						✓	✓									
<b>fan assist</b>						✓										
<b>fan grill</b>						✓	✓									





# MICROWAVE OVENS

To complete your Westinghouse cooking package, there is now a co-ordinated range of microwaves to choose from including standard microwave functionality or the combined microwave and grill model profiled here.

The versatile microwave and grill oven gives you the flexibility of grilling dishes if your main oven is busy baking. When installed in over-bench cabinets they also provide safer eye-level, timed grilling. Combining microwave and grill technology at the same time allows you to ensure thicker meat portions are fully cooked through.

All the new Westinghouse microwave ovens feature a pull bar handle that matches other Westinghouse appliances and there are both countertop and built-in formats. The built-in model shown is supplied with an elegant trim kit and a safe and efficient front venting system to protect your cabinetry.



### SEAMLESS DESIGN INTEGRATION

The design perfectly integrates with the entire Westinghouse kitchen collection, allowing you to perfectly co-ordinate your kitchen design.



### ADD CRISPNESS TO YOUR DISHES

Grill function\* used in isolation, or combined with microwave power allows you to cook a wider range of dishes and add a crisper result where needed.

\*Selected models



### HARDWEARING, STYLISH AND EASY TO CLEAN

Full fingerprint-resistant stainless steel metal fascia on the microwave and trim panel\* provides a hard wearing yet attractive look to your kitchen.

\*Selected models



### TRUE BUILT-IN SOLUTION

Venting to the front of the microwave eliminates the need to duct the heated air out of your cabinetry, offering a true built-in solution.



### PREPARE DISHES QUICKLY & EASILY

With 8 Auto menus including Auto Reheat, Vegetables, Pasta, Meat, Pizza, Potato, Fish and Soup, you'll have your next meal prepared in no time!



### VERSATILE FEATURES

Multi-stage cooking from frozen to cooked, quick start, delayed start cooking and time and weight defrost options.

## MICROWAVE OVENS features<sup>†</sup>



MODEL	WMG281SF	WMS281WF/SF	WMS281SB	WMG281SB
installation	countertop	countertop	built-in	built-in
fascia	white plastic with UV protection	white plastic with UV protection/ fingerprint-resistant stainless steel trims	fingerprint-resistant stainless steel trims and trim kit	fingerprint-resistant stainless steel trims and trim kit
electronic controls	✓	✓	✓	✓
<b>FEATURES</b>				
microwave power	900W	900W	900W	900W
grill power/type	1100W	N/A	N/A	1100W
grill rack	✓			✓
<b>OVEN FUNCTION</b>				
microwave	✓	✓	✓	✓
grill	✓			✓
combination modes	2			2
microwave quick start	✓	✓	✓	✓
delayed start	✓	✓	✓	✓
defrost by weight	✓	✓	✓	✓
defrost by time	✓	✓	✓	✓
auto reheat	✓	✓	✓	✓
auto cook	✓	✓	✓	✓
quick start	✓	✓	✓	✓
<b>OVEN PROGRAMMED FUNCTIONS</b>				
meat	✓	✓	✓	✓
fish	✓	✓	✓	✓
vegetables	✓	✓	✓	✓
pizza	✓	✓	✓	✓
pasta	✓	✓	✓	✓
potatoes	✓	✓	✓	✓
soup	✓	✓	✓	✓
<b>INCLUDED ACCESSORIES</b>				
grill rack				✓
<b>DIMENSIONS</b>				
product dimensions (HxWxD incl. handle)	305 x 513 x 422mm	305 x 513 x 422mm	460 x 594 x 422mm	460 x 594 x 422mm
product dimensions (HxWxD excl. handle)	305 x 513 x 390mm	305 x 513 x 390mm	460 x 594 x 392mm	460 x 594 x 392mm
turntable dimensions	315mm	315mm	315mm	315mm

<sup>†</sup> Refer to the product information on the back page of this brochure.

## GAS COOKTOPS

Westinghouse gas cooktops offer up to four burner types ranging from small to large, including an offset triple ring wok burner. Our gas cooktops use advanced technology to suit a hardworking, productive kitchen including electronic ignition, flame failure, removable control knobs and cast iron trivets\*.

## INDUCTION COOKTOPS

The Westinghouse induction cooktop provides one of the most modern, precise and safe ways to cook.

Induction cooking works by creating heat directly in the bottom of the pan, leaving the cooking surface relatively free of heat. So the only thing hot in the kitchen is the pan.

This makes the kitchen a much safer place for children, because if there's no pan on the cooking surface, then no heat is being generated from the hotplate. It also means the cooktop cannot be accidentally left on. It makes cleaning easier too, as spilt cooking food cannot be burnt onto the cooktop.

Induction cooking is not only the most energy saving way to cook, it gives you precise cooking at exact temperatures in an instant, for perfect heat control.

## CERAMIC COOKTOPS

Westinghouse electric ceramic cooktops have a durable ceramic glass finish that is easy to clean and maintain. With up to six multi-heat zones, hot surface indicators and temperature limiters, the ceramic cooktop models provide straightforward solutions for a variety of cooking demands\*.



### FLAME FAILURE SAFETY

If for any reason the flame on the cooktop is extinguished, this added safety feature (on selected models) will shut off the gas supply.



### ONE-PIECE BURNERS

Cleaning is made easy with the new one-piece burners which lift straight off for easier and more efficient cleaning – no need for tricky re-assembly. (Excluding wok burner)



### EASY CLEAN CERAMIC SURFACE

Not only aesthetically pleasing, the durable glass surface is easy to clean and maintain, ensuring your kitchen is always looking its best.



### TOUCH CONTROLS

Easy to use touch controls provide a seamless surface that is harmonious with the benchtop and includes a button lock so that controls cannot be accidentally started.

\* Features vary by model.



## GAS COOKTOPS\* 60CM features†



MODEL	GHR765S	GHR16W/S
finish	stainless steel	white enamel/stainless steel
connection	10A plug & lead	10A plug & lead
gas rating (NG)	40.6MJ/h	40.6MJ/h
BURNERS		
left front	14.4MJ/h wok	14.4MJ/h wok
left rear	9.0MJ/h	9.0MJ/h
right front	5.1MJ/h	5.1MJ/h
right rear	12.1MJ/h	12.1MJ/h
FEATURES		
trivets	cast	enamel
ignition type	electronic	electronic
flame failure safety	✓	
DIMENSIONS ^		
w x d x h below bench (mm)	594 x 510 x 50	594 x 510 x 50
cut out w x d (mm)	560 x 480	560 x 480

^ IMPORTANT! The above dimensions are a guide only. For complete dimensions and installation requirements, you must refer to the information provided with the product or visit [www.westinghouse.co.nz](http://www.westinghouse.co.nz)

## GAS COOKTOPS\* 75CM & 90CM features†



MODEL	GHR775S	GHR795S	GHR95S
finish	stainless steel	stainless steel	stainless steel
connection	10A plug & lead	10A plug & lead	10A plug & lead
gas rating (NG)	40.6MJ/h	49.6MJ/h	49.6MJ/h
BURNERS			
left front	14.4MJ/h wok	14.4MJ/h wok	14.4MJ/h wok
left rear	9.0MJ/h		
centre front		9.0MJ/h	9.0MJ/h
centre rear		9.0MJ/h	9.0MJ/h
right front	5.1MJ/h	5.1MJ/h	5.1MJ/h
right rear	12.1MJ/h	12.1MJ/h	12.1MJ/h
FEATURES			
trivets	cast	cast	enamel
ignition type	electronic	electronic	electronic
flame failure safety	✓	✓	
DIMENSIONS ^			
WxDxH below bench (mm)	744 x 510 x 50	894 x 510 x 50	894 x 510 x 50
cut out WxD (mm)	560 x 480	830 x 480	830 x 480

\* Gas Type: Configured for natural gas and supplied with an LPG conversion kit.

^ IMPORTANT! The above dimensions are a guide only. For complete dimensions and installation requirements, you must refer to the information provided with the product or visit [www.westinghouse.co.nz](http://www.westinghouse.co.nz)

† Refer to the product information on the back page of this brochure.



Model shown: Induction cooktop PHN944DU.

## ELECTRIC CERAMIC ELEMENT COOKTOPS

features<sup>†</sup>



MODEL	PHN798U	PHN768U
finish	bevelled trimless	bevelled trimless
connection	hardwire	hardwire
maximum power rating	6.5kW	6.5kW
<b>ELEMENTS</b>		
total	4 incl. 1 triple zone	4 incl. 1 triple zone
left front	2300/1600/800W	2300/1600/800W
left rear	1200W	1200W
right front	1800W	1800W
right rear	1200W	1200W
control	electronic touch	electronic touch
<b>FEATURES</b>		
hot surface indicator	✓	✓
child lock	✓	✓
timer	✓	✓
automatic warm-up	✓	✓
<b>DIMENSIONS</b> <sup>^</sup>		
WxDxH below bench (mm)	930 x 520 x 46	610 x 515 x 46
cut out WxD (mm)	880 x 490	560 x 490

## INDUCTION COOKTOPS

features<sup>†</sup>



MODEL	PHN944DU	PHN744DU	PHN644DU
finish	trimless	trimless	trimless
connection	hardwire	hardwire	hardwire
maximum power rating	7.4kW	7.4kW	7.4kW
<b>ELEMENTS</b>			
left front (size/power/boost)	210mm/2300W/3200W	210mm/2300W/3200W	210mm/2300W/3200W
left rear (size/power/boost)	145mm/1400W/1800W	145mm/1400W/1800W	145mm/1400W/1800W
right front (size/power/boost)	145mm/1400W/1800W	145mm/1400W/1800W	145mm/1400W/1800W
right rear (size/power/boost)	180mm/1800W/2800W	180mm/1800W/2800W	180mm/1800W/2800W
<b>FEATURES</b>			
controls	electronic touch	electronic touch	electronic touch
residual heat indication	✓	✓	✓
child lock	✓	✓	✓
timer	✓	✓	✓
automatic warm-up	✓	✓	✓
<b>DIMENSIONS</b> <sup>^</sup>			
WxDxH below bench (mm)	930 x 520 x 46	700 x 515 x 46	610 x 515 x 46
cut out WxD (mm)	880 x 490	560 x 490	560 x 490

<sup>^</sup> IMPORTANT! The above dimensions are a guide only. For complete dimensions and installation requirements, you must refer to the information provided with the product or visit [www.westinghouse.co.nz](http://www.westinghouse.co.nz)

NOTE: A minimum 20mm air gap is recommended below induction cooktop for heat dissipation.

<sup>†</sup> Refer to the product information on the back page of this brochure.





PHR285W/S	PHR395U	PHR284U	PHR222U
white/stainless steel	trimless	trimless	trimless
hardwire	hardwire	hardwire	hardwire
6.4kW	6.4kW	6.5kW	3.0kW
4 incl. 1 dual zone	4 incl. 1 dual zone	4	2
2200/750W	2200/750W	2300W	1200W
1200W	1200W	1200W	1800W
1200W	1800W	1200W	
1800W	1200W	1800W	
knob	knob	knob	knob
✓	✓	✓	✓
604 x 504 x 46	930 x 520 x 46	610 x 515 x 46	320 x 505 x 40
560 x 490	880 x 490	560 x 490	303 x 485

^ IMPORTANT! The above dimensions are a guide only. For complete dimensions and installation requirements, you must refer to the information provided with the product or visit [www.westinghouse.co.nz](http://www.westinghouse.co.nz)

NOTE: A minimum 30mm air gap is recommended below ceramic cooktop for heat dissipation.

† Refer to the product information on the back page of this brochure.

## CANOPY RANGEHOODS

Westinghouse canopy rangehoods provide a stunning visual statement and capture the grease, steam and heat build-up when cooking, drawing smells and residue away from your cooktop. The high performance canopy rangehood brings your kitchen appliances together whilst clearing the air with minimal noise.

## FIXED RANGEHOODS

Westinghouse fixed rangehoods bring everyday practicality to your cooking. Eliminating steam, grease and unsavoury smells, they are also very practical to install, with just four screws. You can fix your rangehood to a wall or beneath the cupboard above your cooktop. The sleek, modern lines will suit almost any style of kitchen.

## SLIDE-OUT AND INTEGRATED RANGEHOODS

Westinghouse slide-out rangehoods are designed to discreetly and conveniently slide away when not in use. Suitable for ducting or recirculating, they remove residue and smells from your cooking, ensuring a well-ventilated kitchen. An integrated rangehood works the same way, with the advantage of being able to design your kitchen cabinetry to house it – effectively hiding it from view and allowing greater flexibility for unique kitchen installations, where a clean, integrated look is required.

## INSTALLATION

You can never be too careful when it comes to installation. When installing your rangehood there are two ways to direct the airflow. If you are able to move the air outside, through a flue or chimney, a ducted system is ideal (see [www.westinghouse.co.nz](http://www.westinghouse.co.nz) or phone 0800 436 245 for more information on ducting kit accessories). If clear exterior access is not an option, you simply install your rangehood to recirculate\* (carbon filter required).

\* Some models can only be recirculated through the cupboard.



### SUPERIOR AIR MOVEMENT

The powerful 3 speed fan efficiently removes fumes, smoke and vapour from the kitchen.



### LIGHT UP YOUR COOKING

Two long life high output LED lights to enhance the lighting of your cooking space without adding heat or higher energy costs to the process.



### TIMED CLEANING

When the cooking is finished the AutoOff fan delay will ensure that all kitchen odours and residual smoke are removed, automatically switching itself off after 5 minutes while you enjoy your meal straight away.



### QUIET OPERATION

Superior air flow without the noise. Designed to operate at low noise levels even in the higher fan settings ensuring you and your family can enjoy conversation while cooking together.



### FRESH AIR FOR CLEANING

The Westinghouse Rangehood is designed for easy maintenance with multi-layered micromesh filters to make catching the grease and residue more effective.



### EASY TO CLEAN

Removable filters are dishwasher safe for easy cleaning with a filter saturation indicator on the control panel to notify you when cleaning is recommended. The resilient stainless steel construction also ensures that cleaning the body of the hood is as easy as possible.

## CANOPY RANGEHOODS

features<sup>†</sup>



MODEL	WRC313S	WRC613S	WRC913S
nominal width (mm)	300	600	900
finish	stainless steel	stainless steel	stainless steel
number of fans/speeds	1/3	1/3	2/3
max. airflow	900m <sup>3</sup> /h	900m <sup>3</sup> /h	900m <sup>3</sup> /h
noise level dB (high/low)	71/61	71/61	71/61
no. of filters	1	2	3
control	touch on glass	touch on glass	touch on glass
top or rear duct hole	top	top	top
lights	2 x 40W LED	2 x 40W LED	2 x 40W LED
optional extension flue	1100mm	1100mm	1100mm
DIMENSIONS <sup>^</sup>			
WxDxH (mm)	300 x 290 x 600	599 x 500 x 90	898 x 500 x 90
maximum flue height (mm)	500	1160	1160

<sup>^</sup> IMPORTANT! The above dimensions are a guide only. For complete dimensions and installation requirements, you must refer to the information provided with the product or visit [www.westinghouse.co.nz](http://www.westinghouse.co.nz)

## SLIDE-OUT AND INTEGRATED RANGEHOODS

features<sup>†</sup>



MODEL	EFG750X/A	EFG540G/A
nominal width (mm)	702	524
finish	stainless steel	grey
number of fans/speeds	2/3	2/3
max. airflow	620m <sup>3</sup> /h	400m <sup>3</sup> /h
noise level dB (high/low)	68/52	67/61
number of filters	2	2
front re-circulating option		
control	slide switch	slide switch
top or rear duct hole	top	top
lights	2 x 40W incandescent	2 x 40W incandescent
DIMENSIONS <sup>^</sup>		
WxDxH (mm)	702 x 284 x 307	524 x 289 x 150

<sup>^</sup> IMPORTANT! The above dimensions are a guide only. For complete dimensions and installation requirements, you must refer to the information provided with the product or visit [www.westinghouse.co.nz](http://www.westinghouse.co.nz)

<sup>†</sup> Refer to the product information on the back page of this brochure.

## FAMILY SIZED FOR BUSY LIVES

Our Family Size™ dishwashers have an additional 10 litres of loadable volume – that’s an extra 4cm of internal height\* making them perfect for fitting long stemmed glasses and all those extra pots and pans you could never quite fit in. Match that with equally impressive washing and drying results and you can take a load off knowing your dishes are in the best of hands.



### FULLY FLEXIBLE CUTLERY TRAY

Not only does our flexible cutlery tray wash all your utensils effectively, it can also safely fit long knives and other larger items. Created to suit your ever-changing needs, the cutlery tray can also be removed partially or taken out all together to fit taller items. (WSF6608 only)



### A HUGE 15-PLACE SETTING CAPACITY

Now you can load more dishes and still get sparkling results. With a super generous capacity that can wash up to 15-place settings, any occasion can be handled with ease. (Excludes WSU6603XR)



### TIME SAVE PROGRAM

When time is of the essence simply choose the Time Save 50-minute program for guaranteed great results. Perfect for washing load after load, this handy feature gets your dishes clean quickly. (Excludes WSU6603XR)



### CONVENIENT FAN DRYING RESULTS

When your load is finished, you can put your dishes away immediately without having to worry about opening the door to aid drying. That’s because our dishwashers feature a fan, which assists the active drying process. The result is dry dishes every time. (WSF6608 only)



### FLEXIBILITY WITH ZONE WASH

Every load is different. That’s why we created upper, lower or both basket zones to give you the flexibility to wash smaller loads when you need to. Plus, you’ll also enjoy the added environmental benefits of saving water and energy. (WSF6608 only)



### HYGIENE OPTION

Use the Hygiene option to get the perfect hygienic clean on the items that need it most. Ideal for chopping boards, knives and baby products, this clever feature sanitises your wash for pure, fresh results. (Excludes WSU6603XR)



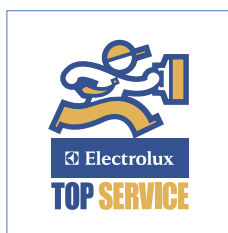
### SUPER FAST 30-MINUTE PROGRAM

Sometimes a quick wash is all you need for a smaller load. Use the quick 30-minute program for lightly soiled dishes at breakfast, lunch or dinner and then just get on with your day.



### HEIGHT ADJUSTABLE UPPER BASKET

For added convenience, the height adjustable upper basket can be easily lifted even when fully loaded. What’s more, with the flexibility to adjust the upper basket as you need, you’ll always find a place for everything.



### TOP SERVICE

We can deliver, install and remove your old dishwasher, as well as offer home service and spare parts. Conditions apply.



Model shown: dishwasher WSF6608X.

## DISHWASHER features†



model	WSF6608X / WSF6608W	WSF6606X / WSF6606W	WSU6603XR
type	60cm freestanding‡	60cm freestanding‡	60cm built-under‡
available finish	mark-resistant stainless steel/white	mark-resistant stainless steel/white	mark-resistant stainless steel
place settings	15	15	13
WELS water star rating*	4.5	4.5	4.5
water consumption (ltr)	13.5	13.5	11.4
energy star rating	3	3	3
low operation noise level dB(A)	45	45	48
push-button electronic controls	✓	✓	✓
delay start	✓	✓	✓
time remaining display	✓	✓	✓
<b>features</b>			
flexible cutlery tray	✓		
upper basket	height adjustable, foldable cup shelves	height adjustable, foldable cup shelves, foldable cutlery rack	height adjustable, foldable cup shelves
lower basket	fold down racks	fold down racks	fold down racks
cutlery basket	✓ (small)	✓	✓
interior light			✓
<b>wash programs</b>	8	6	5
sensor wash (auto)	✓		✓
eco/normal wash	✓	✓	✓
time save	✓	✓	
intensive		✓	
fast 30 minute wash	✓	✓	✓
heavy	✓	✓	✓
rinse	✓	✓	✓
<b>wash options</b>			
zone wash half load	upper/lower/both	upper only	
hygiene plus	✓	✓	
rinse plus	✓		
dry plus	✓		
tablet detergent	✓	✓	✓
drying with recondensation	fan drying	active drying	active drying
number of spray arms	2 + impeller	2 + top shower	2 + top shower
soil level sensor	✓		✓
load sensor	✓	✓	✓
hygienic stainless steel tub	✓	✓	✓
<b>safety</b>			
water safety system	Anti-flood protection, overflow sensor	Anti-flood protection, overflow sensor	Anti-flood protection, overflow sensor
child lock on control	✓	✓	✓
<b>dimensions</b>			
removable worktop (built under installation)	✓	✓	
height adjustment (mm)	0-20	0-20	0-60
water inlet#	cold	cold	cold
dimension W x H x D (mm)^	596 x 845 x 598	596 x 845 x 598	596 x (818-878) x 580
built-in dimension W x H x D (mm)^			600 x (820-880) x 570

† Refer to the product information on the back page of this brochure.

‡ Built-under – Dishwasher needs to be secured under a counter with supplied brackets and screws. Option to integrate the dishwasher behind a cabinetry kick panel if required.

‡ Freestanding – Dishwasher does not need to be secured under a counter. It can remain as a freestanding unit or fit into a cavity. The top panel can be removed if needed to fit under a tight fitting benchtop.

\* WELS Standard AS/NZS 6400.2005.

# Water up to 60°C can be used.

^ Depth measured to front corner of door, excludes control panel.

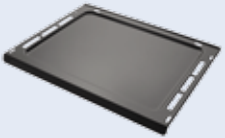
## ACCESSORIES



### CAST BAKING DISH

Take advantage of the size of your oven with this huge baking dish specifically designed for you to make the most of your new Westinghouse oven. The cast baking dish features a non-stick coating so that you spend less time cleaning.

Model number: ABD610



### BAKING TRAY

A full-width, enamelled baking tray is available. Designed to give you the widest possible baking surface, the baking tray is available for all new Westinghouse BOSS® ovens.

Model numbers: ABT600 Non-perforated Baking Tray



### SELF CLEANING CATALYTIC LINERS

Catalytic liners are self cleaning panels that fit into the oven enabling you to spend less time cleaning and more time enjoying yourself. These panels have been designed specifically for your oven. (PDR790, POR783 & POR668 come standard with catalytic liners).

Model numbers: **Built-in Electric Ovens:** CKBFL2 Rear & side liners (all models except POR783 and POR883), CKETL2 Top liners (all models except POR883 and POR667), **Gas Ovens:** CKGFL3 Rear & side liners.

Catalytic Liner Kit	Description	Models Compatible with the Catalytic Liner Kit
ACC041	side and rear liners	POR663, POR667, POR668, DSP635
ACC042	side liners	POR663, POR667, POR668, DSP635
ACC044	side liners	PDR790, POR783, PDR794S



### FAN FILTER

The stainless steel, dishwasher-cleanable fan filter stops cooking residues from being unnecessarily spread around the oven.

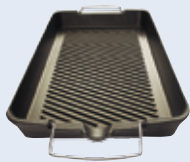
Model number: CKDFF1



### PIZZA STONE KIT

Cook pizza like a pro with this pizza stone kit.

Model number: PSK1



### GRIDDLE PLATE

The griddle plate features a ribbed base, high sides, a pour spout and is coated in an easy clean non-stick surface. It can be placed across two gas burners or electric elements to provide BBQ-style cooking and endless versatility.

Model number: GRIDDLE



### RANGEHOOD CARBON FILTERS

Remove excess cooking smells from the kitchen with an additional carbon filter. Placed below the fan, carbon filters are ideally used when the main unit is in recirculating mode.

Model numbers: ARCFD (for fixed and slide-out models), AR500CF (for canopy models), AR600CF (suits WRG970CS)

### DUCTING KITS

Please visit [www.westinghouse.co.nz](http://www.westinghouse.co.nz) or phone 0800 436 245 for information on ducting kit accessories.

**For more information on all Westinghouse appliances,  
or for dimension and installation information, call into your retailer,  
phone or email our customer care team or visit our website:**

phone: 0800 436 245  
fax: 0800 225 088  
email: [customercare@electrolux.co.nz](mailto:customercare@electrolux.co.nz)  
web: [www.westinghouse.co.nz](http://www.westinghouse.co.nz)

**Westinghouse. We are part of the Electrolux family.  
Share more of our thinking at [www.electrolux.co.nz](http://www.electrolux.co.nz)**

#### **WARRANTY**

Electrolux (NZ) Ltd warrants that for domestic application, the Westinghouse Ovens, Built-in Ovens, Freestanding Cookers, Cooktops, Ranges and Dishwashers featured in this brochure are free from defects in materials and workmanship for a period of 24 months (and 12 months for Microwave Ovens) from the date of first purchase, subject to the conditions set out in the warranty card accompanying the product when purchased and NZ Consumer Law. Westinghouse dishwashers are only suitable for domestic or equivalent applications. They are not suitable for applications where special health and industry requirements and regulations apply.

#### **† PRODUCT INFORMATION**

The descriptors and illustrations in this publication apply to the specific products and models described as at the date of issue. Under our policy of continuous product development, product specifications may change without notice. Prospective purchasers should therefore check with their retailer to ensure this publication correctly describes the products that are being offered for sale. All information supplied is to be used for general reference purposes only and is on the understanding that Electrolux (NZ) Ltd will not be liable for any loss, liability or damage of whatever kind arising as a result of reliance on such information. Colours of products illustrated are as close as printing limitations allow. Electrolux will at all times comply with its obligations pursuant to law including Consumer Guarantees Act (NZ), Sale of Goods Act (NZ) and Fair Trading Act (NZ).

® BOSS is a registered trademark of Electrolux Home Products Pty Ltd

© 2014 Electrolux (NZ) Ltd CN 36212 WKIT\_NZ\_Mar14