



※ The actual screen may differ from the image.

1. Smart Control Type Comparison

> This product is provided the smart control features of two mobile apps. (The LCD module must be at least version 5055. If necessary, please update.)

- ① Samsung Smart Home App
- ② Samsung Smart Washer App

Type	Washer (Setting)	Mobile (App)
Samsung Smart Home (SHP)	<p>[Ref] 'Samsung Smart Home' is the default setting.</p>	
Samsung Smart Washer	<p>[Ref] Easy Connection feature is disabled when selected 'Samsung Smart Washer'.</p>	

Mobile App related to the Smart Control

※ We recommend using the Samsung Smart Home App.

- ① Samsung Smart Home App

.When using the new Samsung Smart Home App, makes it easy to access and control the washing machine anytime, anywhere.
 .Play Store or the Apple Store "Samsung Smart Home", please find and install the app.

- ② Samsung Smart washer App

.You can control device through Indoor Control / Outdoor Control.
 .Play Store or the Apple Store "Samsung Smart Washer", please find and install the app.

2. Reference Information of Smart Control

1. Pre-Checklist

- 1) The Samsung Smart Home app supports Android OS 4.0 (ICS) or later which is optimized for Samsung smart phones (Galaxy S and Galaxy Note series). Some functions of this app may work differently on other devices.
- 2) For i-Phone models, Samsung Smart Home app is scheduled to be available from the latter half of 2014 at Apple App Store.
- 3) AP(Access Point) must be connected to the external Internet. (check firewall or Internet connection of AP)
- 4) If wireless network not connected. Smart Control is not available.
- 5) The surrounding environment may affect the wireless network performance.
- 6) The authentication procedure is required just once for the first use.
 (Use a "Easy Connection" feature for Samsung Smart Home app, Use a "Smart Control" feature for Samsung Smart Washer app.)



※ The actual screen may differ from the image.

Usage of Smart Control

1. Samsung Smart Home

Smart Control by Samsung Smart Home app

1. Samsung Smart Home – Register Device

Note! Before run the app, Samsung Account is required.



Note! AP must be connected to the external Internet.
(check firewall or Internet connection of AP)

Mobile

Set AP & Run App



Add new device



Select Washer



Input AP name & pw



Connect Washer



Done



Washer

Select Easy Connection

Done



Note!
The authentication procedure is required just once for the first use.

2. Samsung Smart Home – Control Washer

Mobile

Run App



Select existed washer



Select Washer

Launcher opens washer



Monitor washer



Control Washer



Done

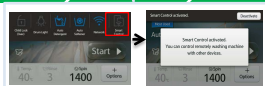


Washer
Check Wi-Fi Connection



Smart Control On

Done



Note!
When Smart Control activated, you can control remotely washing machine with other devices.



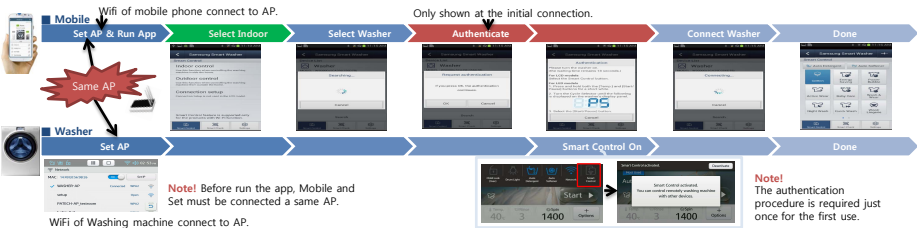
※ The actual screen may differ from the image.

Usage of Smart Control

2. Samsung Smart Washer

Smart Control by Samsung Smart Washer app

1. Samsung Smart Washer – Indoor Control (Register Device & Control Washer)



2. Samsung Smart Washer – Outdoor Control (Register Device & Control Washer)

